

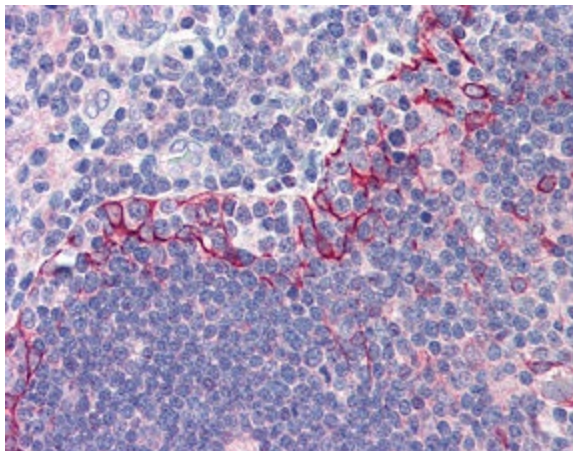
## Product datasheet for RA30053-50

### TLR2 Rabbit Polyclonal Antibody

#### Product data:

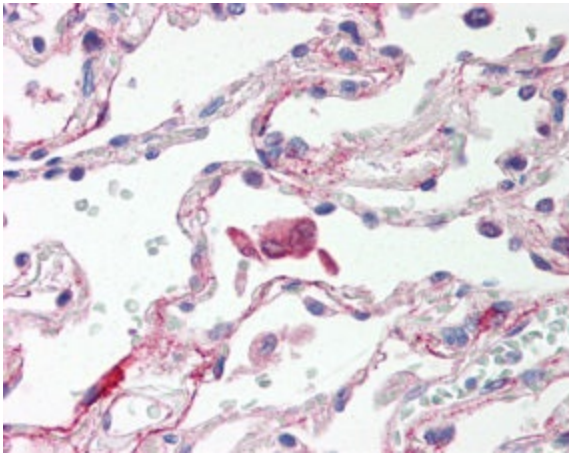
Product Type:	Primary Antibodies
Applications:	IHC, WB
Host:	Rabbit
Isotype:	IgG
Clonality:	Polyclonal
Formulation:	State: Aff - Purified
Gene Name:	Homo sapiens toll like receptor 2 (TLR2), transcript variant 3
Database Link:	<a href="#">Entrez Gene 7097 Human</a>
Synonyms:	Toll-like receptor 2
Protein Families:	Druggable Genome, Transmembrane
Protein Pathways:	Toll-like receptor signaling pathway

#### Product images:

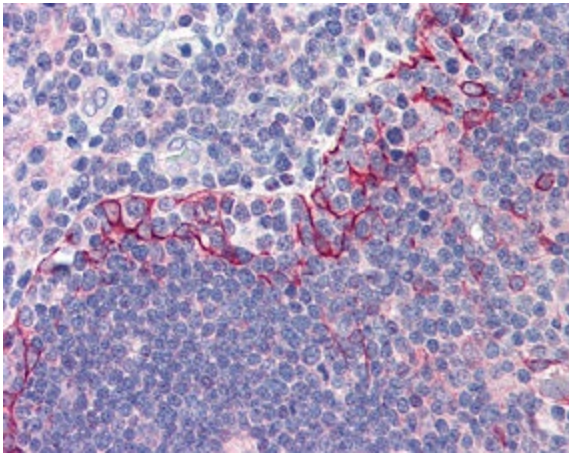


TLR6 staining of Human Thymus (formalin-fixed, paraffin-embedded) at 5 ug/ml followed by biotinylated goat anti-rabbit IgG secondary antibody, alkaline phosphatase-streptavidin and chromogen. Protocol on data-sheet.

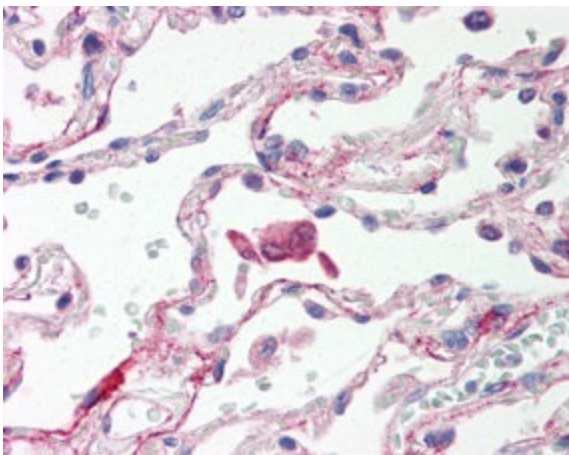




TLR6 staining of Human Lung (formalin-fixed, paraffin-embedded) at 5 ug/ml followed by biotinylated goat anti-rabbit IgG secondary antibody, alkaline phosphatase-streptavidin and chromogen. Protocol on data-sheet.



TLR6 staining of Human Thymus (formalin-fixed, paraffin-embedded) at 5 ug/ml followed by biotinylated goat anti-rabbit IgG secondary antibody, alkaline phosphatase-streptavidin and chromogen. Protocol on data-sheet.



TLR6 staining of Human Lung (formalin-fixed, paraffin-embedded) at 5 ug/ml followed by biotinylated goat anti-rabbit IgG secondary antibody, alkaline phosphatase-streptavidin and chromogen. Protocol on data-sheet.