

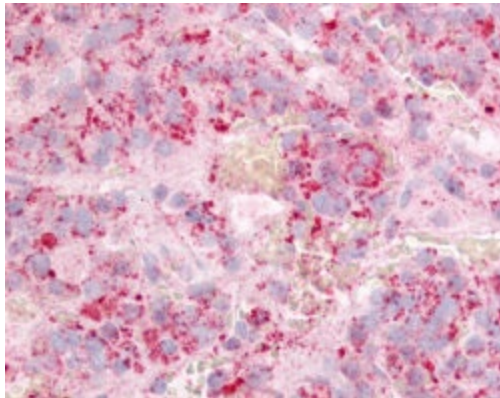
## Product datasheet for RA30050-50

### GPR12 Rabbit Polyclonal Antibody

#### Product data:

Product Type:	Primary Antibodies
Applications:	IHC
Reactivity:	Human
Host:	Rabbit
Isotype:	IgG
Clonality:	Polyclonal
Formulation:	State: Aff - Purified
Gene Name:	Homo sapiens G protein-coupled receptor 12 (GPR12)
Database Link:	<a href="#">Entrez Gene 2835 Human</a>
Synonyms:	G-protein coupled receptor 12
Protein Families:	Druggable Genome, GPCR, Transmembrane

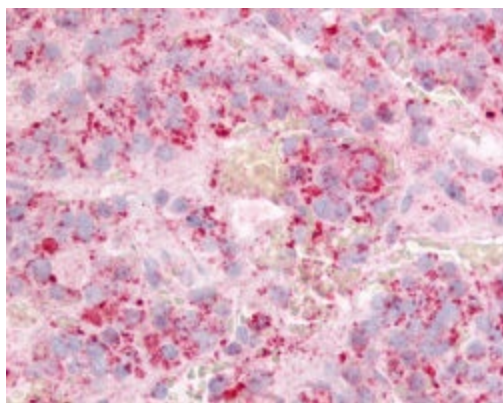
#### Product images:



GPR12 staining of the Human Anterior Pituitary (paraffin-embedded).



[View online »](#)



GPR12 staining of the Human Anterior Pituitary (paraffin-embedded).