

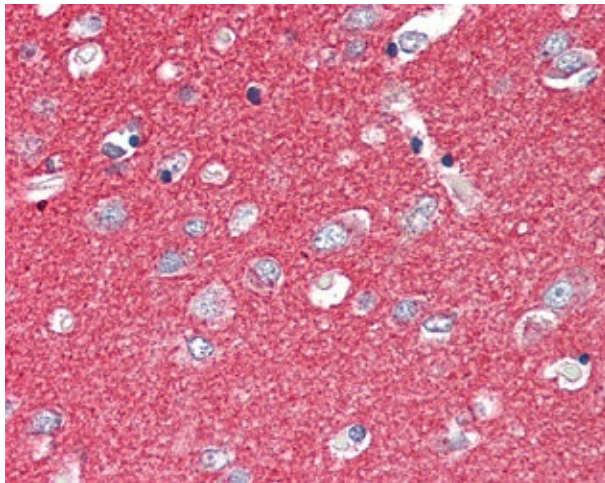
Product datasheet for RA30045-50

SNAP25 (C-term) Rabbit Polyclonal Antibody

Product data:

Product Type:	Primary Antibodies
Applications:	ELISA, IHC, WB
Reactivity:	Human, Mouse, Rat
Host:	Rabbit
Isotype:	IgG
Clonality:	Polyclonal
Formulation:	State: Aff - Purified
Gene Name:	synaptosome associated protein 25kDa
Database Link:	Entrez Gene 6616 Human
Synonyms:	SNAP-25, SUP, SNAP, Super Protein, RIC4, ric-4

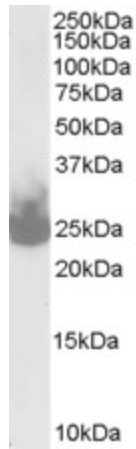
Product images:



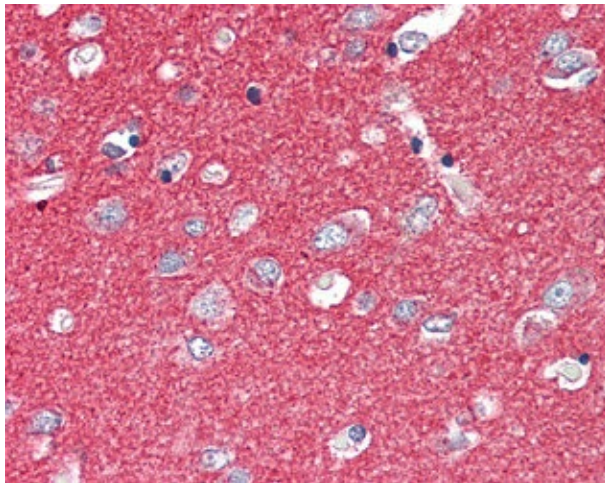
SNAP25 staining of rat brain tissue, cortex:
Formalin-Fixed Paraffin-Embedded.



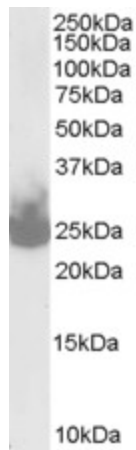
[View online »](#)



SNAP25 staining of Mouse Brain lysate (35ug protein in RIPA buffer). Primary incubation was 1 hour. Detected by chemiluminescence (dilution: 0.03ug/ml).



SNAP25 staining of rat brain tissue, cortex: Formalin-Fixed Paraffin-Embedded.



SNAP25 staining of Mouse Brain lysate (35ug protein in RIPA buffer). Primary incubation was 1 hour. Detected by chemiluminescence (dilution: 0.03ug/ml).