

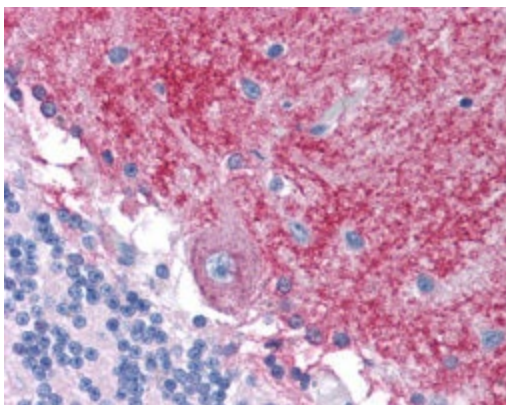
Product datasheet for RA30012-50

Ionotropic Glutamate receptor 2 (GRIA2) Rabbit Polyclonal Antibody

Product data:

Product Type:	Primary Antibodies
Applications:	IHC, WB
Reactivity:	Human
Host:	Rabbit
Isotype:	IgG
Clonality:	Polyclonal
Formulation:	State: Aff - Purified
Gene Name:	Homo sapiens glutamate ionotropic receptor AMPA type subunit 2 (GRIA2), transcript variant 1
Database Link:	Entrez Gene 2891 Human
Synonyms:	GluR-B, GluR-K2, Glutamate receptor ionotropic, AMPA2, GRIA2
Protein Families:	Druggable Genome, Ion Channels: Glutamate Receptors, Transmembrane
Protein Pathways:	Amyotrophic lateral sclerosis (ALS), Long-term depression, Long-term potentiation, Neuroactive ligand-receptor interaction

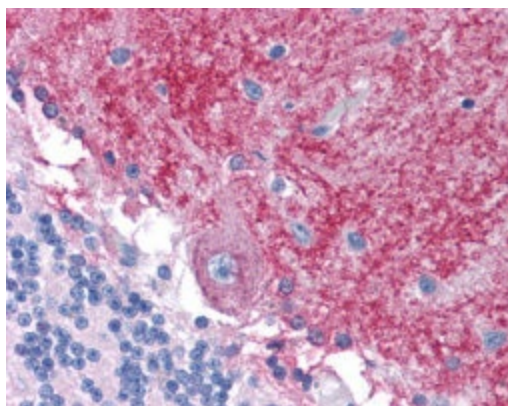
Product images:



GluR2 staining of human brain tissue, cerebellum: Formalin-Fixed Paraffin-Embedded.



[View online »](#)



GluR2 staining of human brain tissue, cerebellum: Formalin-Fixed Paraffin-Embedded.