

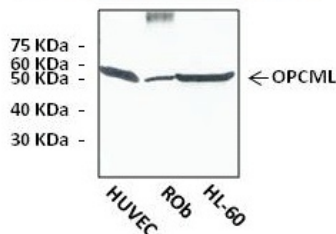
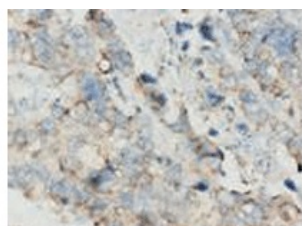
## Product datasheet for RA26002-100

### OPCML (C-term) Rabbit Polyclonal Antibody

#### Product data:

Product Type:	Primary Antibodies
Applications:	IHC, WB
Reactivity:	Human, Mouse, Rabbit, Rat
Host:	Rabbit
Isotype:	IgG
Clonality:	Polyclonal
Formulation:	State: Aff - Purified
Gene Name:	Homo sapiens opioid binding protein/cell adhesion molecule like (OPCML), transcript variant 1
Database Link:	<a href="#">Entrez Gene 116597 Rat</a> <a href="#">Entrez Gene 330908 Mouse</a> <a href="#">Entrez Gene 4978 Human</a>
Synonyms:	Opioid-binding cell adhesion molecule
Protein Families:	Druggable Genome, Transmembrane

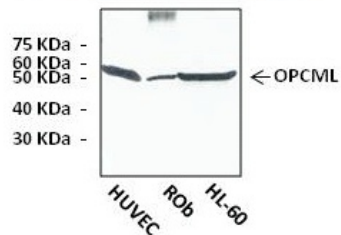
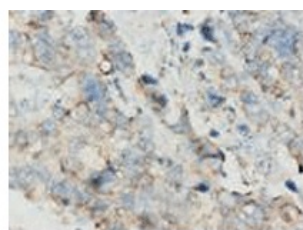
#### Product images:



Top: OPCML immunohistochemical staining of paraffin-embedded human stomach cancer tissue. Bottom: Western Blot detection of endogenous OPCML proteins from various normal primary cell lysates using OPCML antibody. The predicted molecular weight of OPCML is 34 kDa. Due to post-translational modifications, the actual molecular weight of mature OPCML in the SDS-PAGE gel is 51 kDa. HUVEC: Human Umbilical Vein Endothelial Cells; ROb: Rat Osteoblasts.



[View online »](#)



Top: OPCML immunohistochemical staining of paraffin-embedded human stomach cancer tissue. Bottom: Western Blot detection of endogenous OPCML proteins from various normal primary cell lysates using OPCML antibody. The predicted molecular weight of OPCML is 34 kDa. Due to post-translational modifications, the actual molecular weight of mature OPCML in the SDS-PAGE gel is 51 kDa. HUVEC: Human Umbilical Vein Endothelial Cells; ROb: Rat Osteoblasts.