

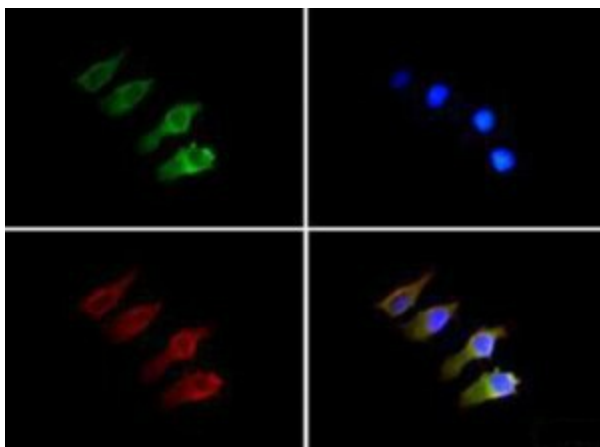
Product datasheet for RA25088-50

Semaphorin 3B (SEMA3B) (100-200) Rabbit Polyclonal Antibody

Product data:

Product Type:	Primary Antibodies
Applications:	IF, IHC, WB
Reactivity:	Bovine, Canine, Human, Mouse, Primate, Rat
Host:	Rabbit
Isotype:	IgG
Clonality:	Polyclonal
Formulation:	State: Aff - Purified
Gene Name:	semaphorin 3B
Database Link:	Entrez Gene 7869 Human
Synonyms:	Semaphorin-3B, Semaphorin-V, Sema V, SEMA5, SEMAA

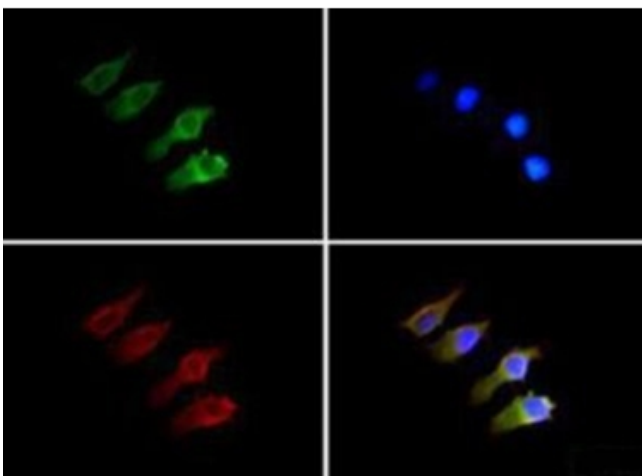
Product images:



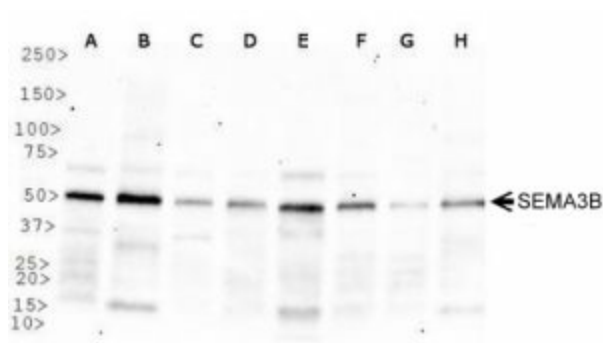
SEMA3B antibody staining of Neuro-2a cells with Dylight 488 (green). Nuclei and alpha-tubulin were counterstained with DAPI (blue) and Dylight 594 (red). Protocol on datasheet.



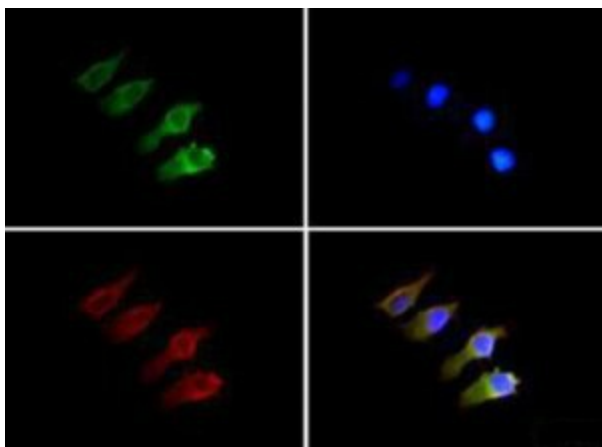
[View online »](#)



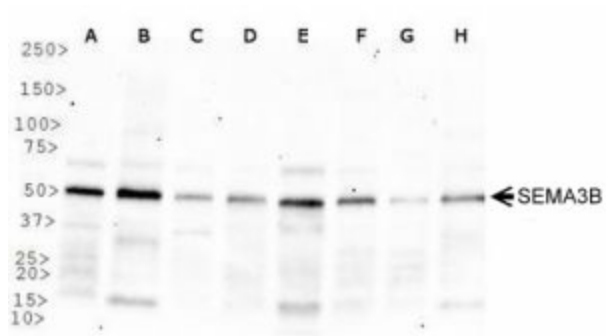
SEMA3B antibody staining of Neuro-2a cells with Dylight 488 (green). Nuclei and alpha-tubulin were counterstained with DAPI (blue) and Dylight 594 (red). Protocol on datasheet.



Western blot analysis of SEMA3B in A. Hela WCE B. Ntera2 C. A431 D. HepG2 E. MCF7 F. NIH/3T3 G. PC12 H. Cos7. Protocol on datasheet.



SEMA3B antibody staining of Neuro-2a cells with Dylight 488 (green). Nuclei and alpha-tubulin were counterstained with DAPI (blue) and Dylight 594 (red). Protocol on datasheet.



Western blot analysis of SEMA3B in A. Hela WCE
B. Ntera2 C. A431 D. HepG2 E. MCF7 F. NIH/3T3
G. PC12 H. Cos7. Protocol on datasheet.