

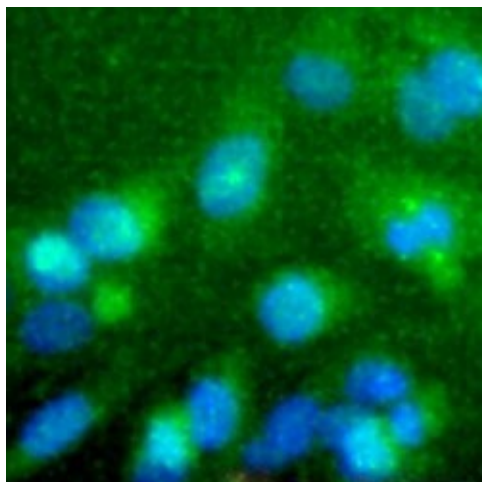
Product datasheet for RA25074-100

Macrophage Scavenger Receptor I (MSR1) (300-400) Rabbit Polyclonal Antibody

Product data:

Product Type:	Primary Antibodies
Applications:	IF, IHC, WB
Reactivity:	Bovine, Canine, Human, Mouse, Primate, Rat
Host:	Rabbit
Isotype:	IgG
Clonality:	Polyclonal
Formulation:	State: Aff - Purified
Gene Name:	Homo sapiens macrophage scavenger receptor 1 (MSR1), transcript variant SR-All
Database Link:	Entrez Gene 20288 Mouse Entrez Gene 498638 Rat Entrez Gene 4481 Human
Synonyms:	MSR1, SCARA1
Protein Families:	Druggable Genome, Transmembrane

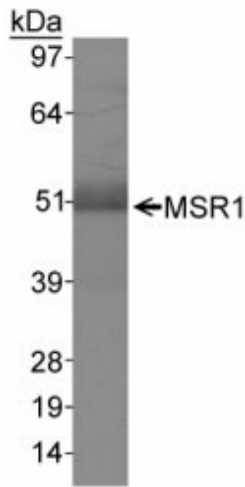
Product images:



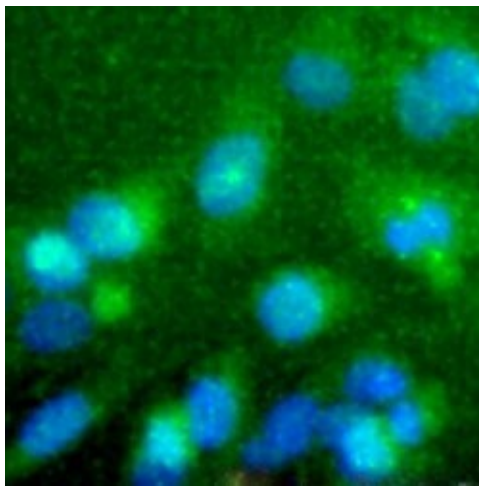
MSRI staining (green) in Hela cells at a 1:50 dilution. Nuclei (Blue) are counterstained using Hoechst 33258.



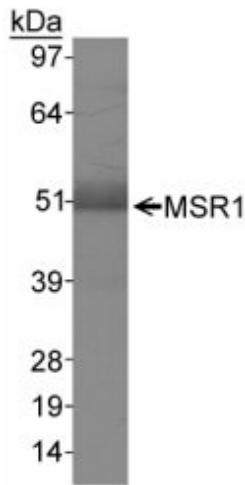
[View online »](#)



Detection of MSR I in human liver



MSR1 staining (green) in HeLa cells at a 1:50 dilution. Nuclei (Blue) are counterstained using Hoechst 33258.



Detection of MSR I in human liver