

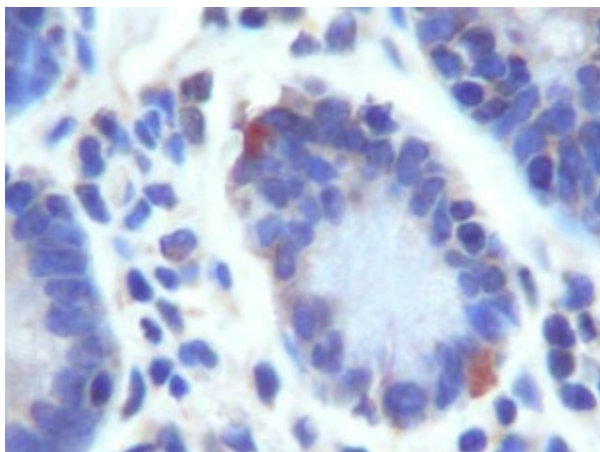
Product datasheet for RA25071-100

LGR5 (650-700) Rabbit Polyclonal Antibody

Product data:

Product Type:	Primary Antibodies
Applications:	FC, IF, IHC, WB
Reactivity:	Human
Host:	Rabbit
Isotype:	IgG
Clonality:	Polyclonal
Formulation:	State: Aff - Purified
Gene Name:	Homo sapiens leucine rich repeat containing G protein-coupled receptor 5 (LGR5), transcript variant 1
Database Link:	Entrez Gene 8549 Human
Synonyms:	G-protein coupled receptor 49, GPR67, HG38
Protein Families:	Druggable Genome, GPCR, Transmembrane

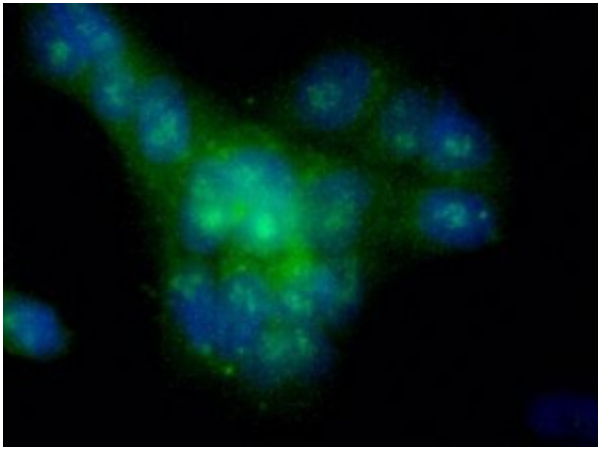
Product images:



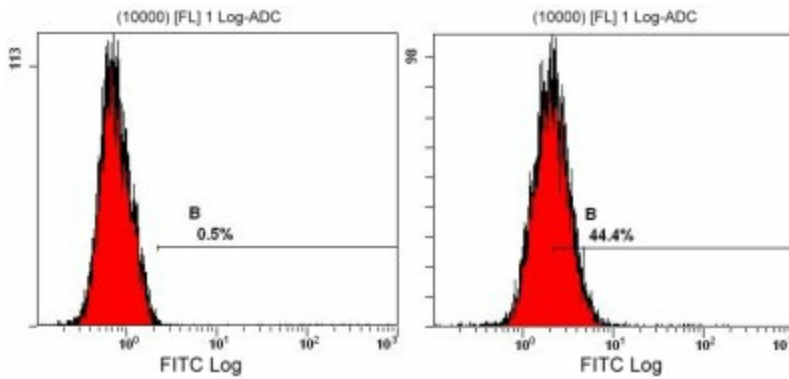
Immunohistochemical analysis of human small intestine using GPR49



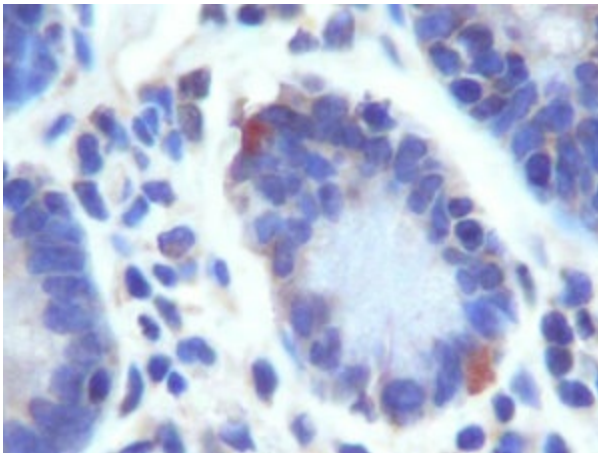
[View online »](#)



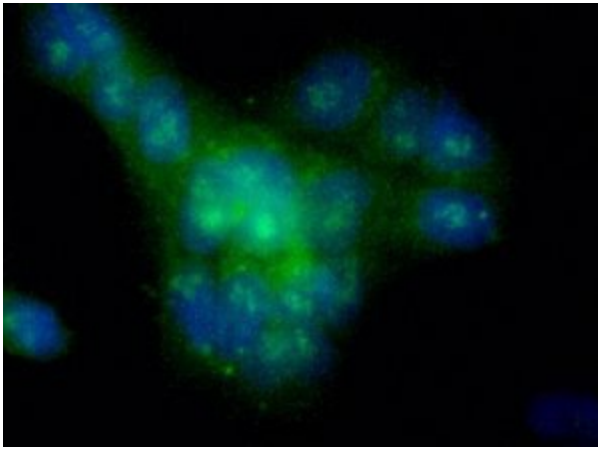
GPR49 staining of HeLa cells (Green) detected with DyLight Fluor 488 conjugated anti-rabbit IgG secondary antibody. Nuclei are counterstained with Hoechst 33258 (Blue).



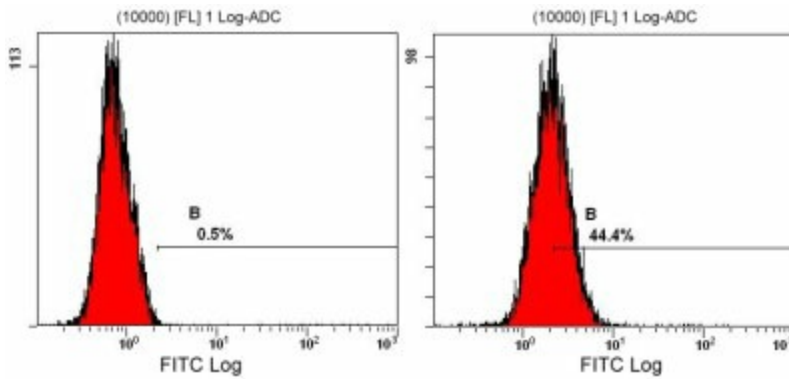
GPR49 FACS staining of NTERA-2 cells using at a 1:50 dilution detected using Dylight-488 conjugated goat anti-rabbit IgG secondary



Immunohistochemical analysis of human small intestine using GPR49



GPR49 staining of HeLa cells (Green) detected with DyLight Fluor 488 conjugated anti-rabbit IgG secondary antibody. Nuclei are counterstained with Hoechst 33258 (Blue).



GPR49 FACS staining of NTERA-2 cells using at a 1:50 dilution detected using Dylight-488 conjugated goat anti-rabbit IgG secondary