

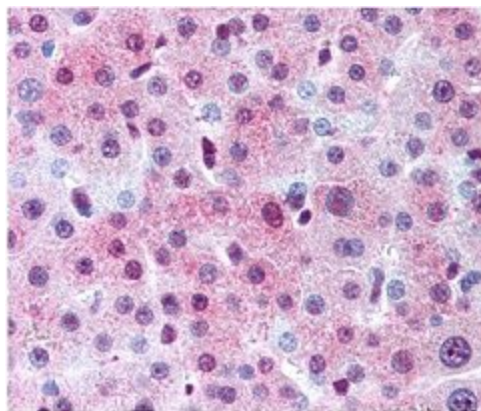
Product datasheet for RA25025-100

SPTBN2 (2150-2200) Rabbit Polyclonal Antibody

Product data:

Product Type:	Primary Antibodies
Applications:	IHC, IP, WB
Reactivity:	Human, Mouse, Rat
Host:	Rabbit
Isotype:	IgG
Clonality:	Polyclonal
Formulation:	State: Aff - Purified
Gene Name:	Homo sapiens spectrin beta, non-erythrocytic 2 (SPTBN2)
Database Link:	Entrez Gene 6712 Human
Synonyms:	Spectrin beta chain brain 2, Spectrin non-erythroid beta chain 2, Beta-III spectrin, KIAA0302

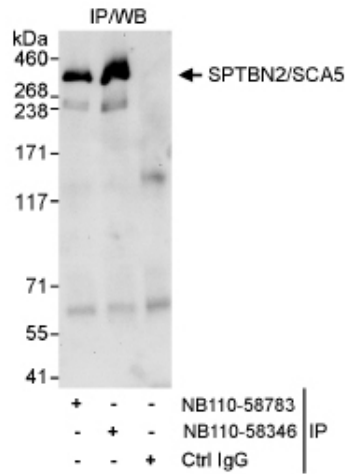
Product images:



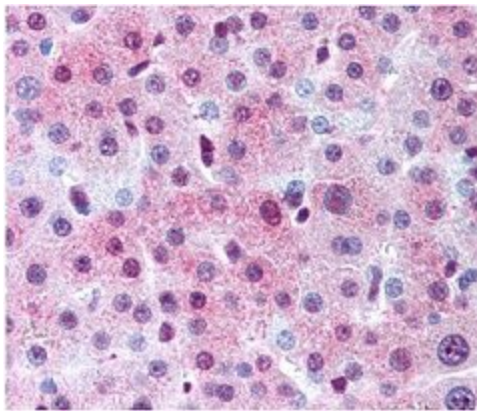
Detection of Spectrin Beta-III in human hepatocytes



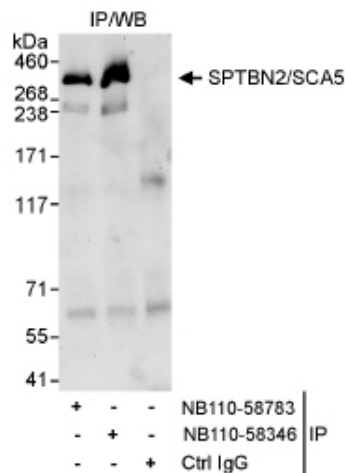
[View online »](#)



Detection of Human Spectrin Beta III (SPTBN2/SCA5) by Western Blot of Immunoprecipitates. Samples: Whole cell lysate (1 mg for IP, 20% of IP loaded) from HeLa cells. Antibodies: Affinity purified rabbit anti-SPTBN2/SCA5 used for IP at 3 mcg/mg lysate. SPTBN2/SCA5 was also immunoprecipitated by rabbit anti-SPTBN2/SCA5 antibody NB110-58346, which recognizes a downstream epitope. Detection: Chemiluminescence



Detection of Spectrin Beta-III in human hepatocytes



Detection of Human Spectrin Beta III (SPTBN2/SCA5) by Western Blot of Immunoprecipitates. Samples: Whole cell lysate (1 mg for IP, 20% of IP loaded) from HeLa cells. Antibodies: Affinity purified rabbit anti-SPTBN2/SCA5 used for IP at 3 mcg/mg lysate. SPTBN2/SCA5 was also immunoprecipitated by rabbit anti-SPTBN2/SCA5 antibody NB110-58346, which recognizes a downstream epitope. Detection: Chemiluminescence