

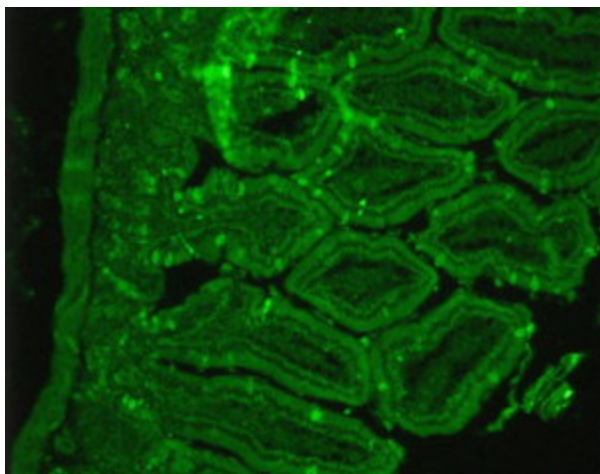
## Product datasheet for RA25005-100

### Somatostatin Receptor 2 (SSTR2) Rabbit Polyclonal Antibody

#### Product data:

Product Type:	Primary Antibodies
Applications:	IF, WB
Reactivity:	Human, Mouse, Rat
Host:	Rabbit
Clonality:	Polyclonal
Formulation:	State: Serum
Gene Name:	Homo sapiens somatostatin receptor 2 (SSTR2)
Database Link:	<a href="#">Entrez Gene 20606 Mouse</a> <a href="#">Entrez Gene 54305 Rat</a> <a href="#">Entrez Gene 6752 Human</a>
Synonyms:	Somatostatin receptor type 2, SS-2-R, SS2-R, SS2R, SRIF-1
Protein Families:	Druggable Genome, GPCR, Transmembrane
Protein Pathways:	Neuroactive ligand-receptor interaction

#### Product images:



[View online »](#)

