

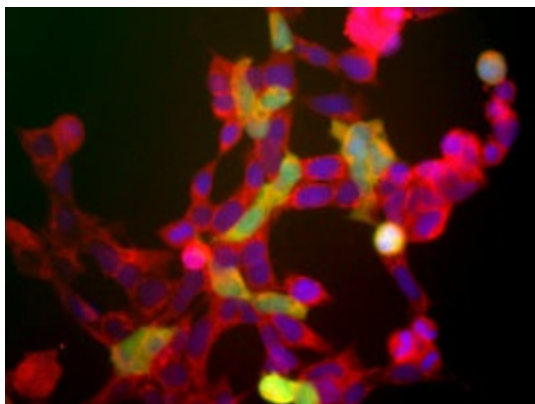
Product datasheet for RA22110-100

NSE (ENO2) Rabbit Polyclonal Antibody

Product data:

Product Type:	Primary Antibodies
Applications:	IF, WB
Reactivity:	Human
Host:	Rabbit
Isotype:	IgG
Clonality:	Polyclonal
Formulation:	State: Serum
Gene Name:	Homo sapiens enolase 2 (gamma, neuronal) (ENO2)
Database Link:	Entrez Gene 2026 Human
Synonyms:	NSE, ENO2, Enolase 2, Neural enolase, Gamma-enolase
Protein Pathways:	Glycolysis / Gluconeogenesis, Metabolic pathways, RNA degradation

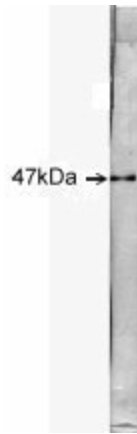
Product images:



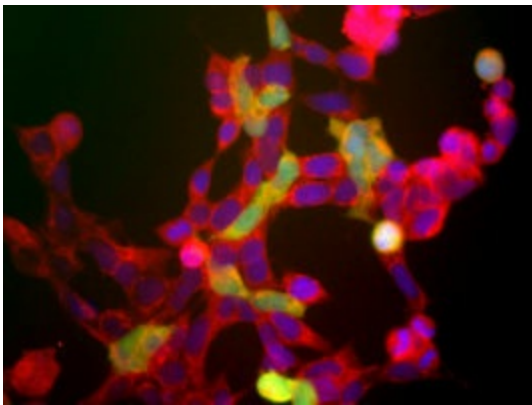
shows the human embryonic kidney cells line 293 (Hek293), which express many neuronal proteins (1). The red channel shows staining with NSE, which recognizes all of these 293 cells. The green channels shows staining for another neuronal marker with mouse monoclonal to ubiquitin C-terminal hydrolase 1 (UCHL1) antibody. This neuronal gene is apparently activated in a cell density dependent fashion and at this stage only a few cells express this protein. However all cells that express NSE also express UCHL1.



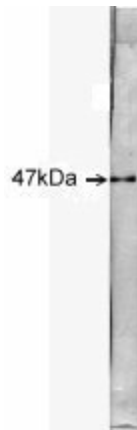
[View online »](#)



Blot of rat spinal cord probed with rabbit antibody to NSE. The antibody stains a single sharp band corresponding to NSE at about 47kDa. Protocol on data-sheet.



shows the human embryonic kidney cells line 293 (Hek293), which express many neuronal proteins (1). The red channel shows staining with NSE, which recognizes all of these 293 cells. The green channels shows staining for another neuronal marker with mouse monoclonal to ubiquitin C-terminal hydrolase 1 (UCHL1) antibody. This neuronal gene is apparently activated in a cell density dependent fashion and at this stage only a few cells express this protein. However all cells that express NSE also express UCHL1.



Blot of rat spinal cord probed with rabbit antibody to NSE. The antibody stains a single sharp band corresponding to NSE at about 47kDa. Protocol on data-sheet.