

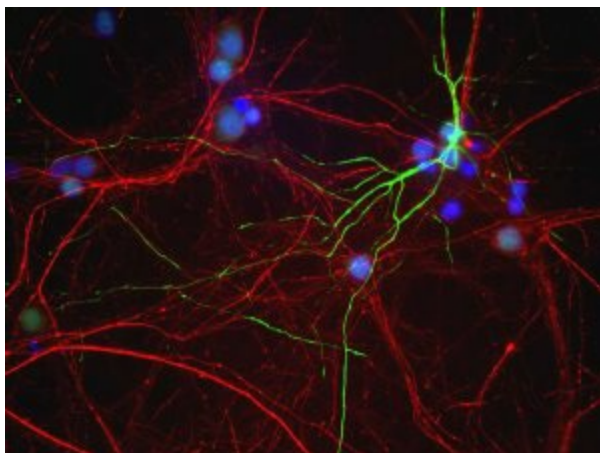
Product datasheet for RA22109-100

Peripherin (PRPH) Rabbit Polyclonal Antibody

Product data:

Product Type:	Primary Antibodies
Applications:	IF, WB
Reactivity:	Feline, Human, Mouse, Rat
Host:	Rabbit
Isotype:	IgG
Clonality:	Polyclonal
Formulation:	State: Serum
Gene Name:	Homo sapiens peripherin (PRPH)
Database Link:	Entrez Gene 19132 Mouse Entrez Gene 24688 Rat Entrez Gene 5630 Human
Synonyms:	PRPH, NEF4, PRPH1
Protein Pathways:	Amyotrophic lateral sclerosis (ALS)

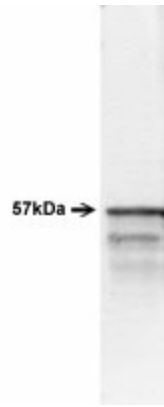
Product images:



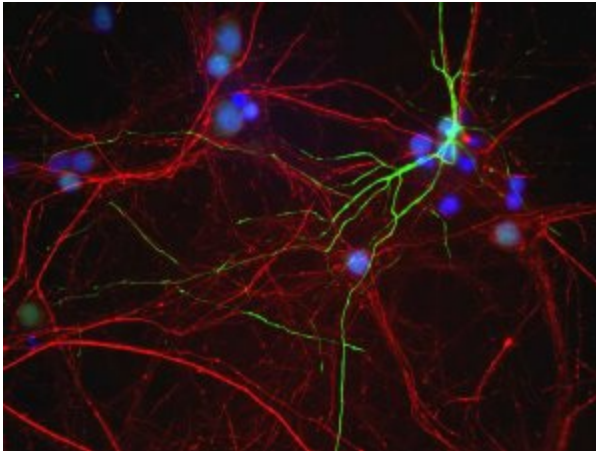
Mixed neuron/glia cultures from newborn rat brain stained with peripherin (green) and phosphorylated NF-H (red). A class of large neurons, like the one in the middle of this image, contain peripherin, while the majority of neurons and their processes contain NF-H and not peripherin. Interestingly, the peripherin positive cells often contain a cytoplasmic inclusion next to the nucleus which stains for both peripherin and NF-H, and so appears golden in this kind of image. The blue channel reveals the localization of DNA.



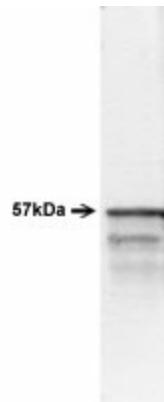
[View online »](#)



Western blot of whole rat brain stem homogenate stained with Peripherin at a dilution of 1:20,000. A prominent band running with an apparent SDS-PAGE molecular weight of ~57kDa corresponds to Peripherin. A lower band at ~48kDa is derived from the Peripherin molecule.



Mixed neuron/glia cultures from newborn rat brain stained with peripherin (green) and phosphorylated NF-H (red). A class of large neurons, like the one in the middle of this image, contain peripherin, while the majority of neurons and their processes contain NF-H and not peripherin. Interestingly, the peripherin positive cells often contain a cytoplasmic inclusion next to the nucleus which stains for both peripherin and NF-H, and so appears golden in this kind of image. The blue channel reveals the localization of DNA.



Western blot of whole rat brain stem homogenate stained with Peripherin at a dilution of 1:20,000. A prominent band running with an apparent SDS-PAGE molecular weight of ~57kDa corresponds to Peripherin. A lower band at ~48kDa is derived from the Peripherin molecule.