

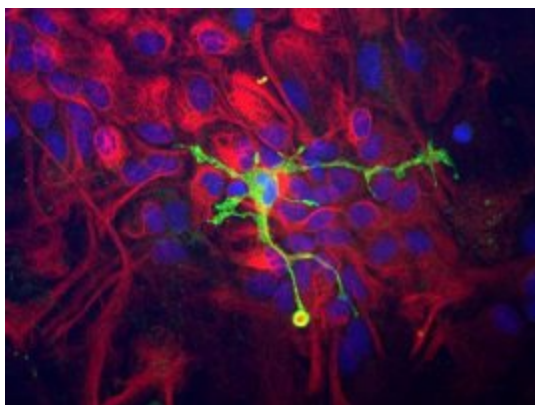
Product datasheet for RA22108-100

Coronin 1a (CORO1A) Rabbit Polyclonal Antibody

Product data:

Product Type:	Primary Antibodies
Applications:	IF, WB
Reactivity:	Feline, Human, Mouse, Rat
Host:	Rabbit
Isotype:	IgG
Clonality:	Polyclonal
Formulation:	State: Serum
Gene Name:	Homo sapiens coronin 1A (CORO1A), transcript variant 2
Database Link:	Entrez Gene 12721 Mouse Entrez Gene 155151 Rat Entrez Gene 11151 Human
Synonyms:	Coronin-like protein p57, Coronin-like protein, CORO1A, CORO1, Clipin-A, TACO

Product images:



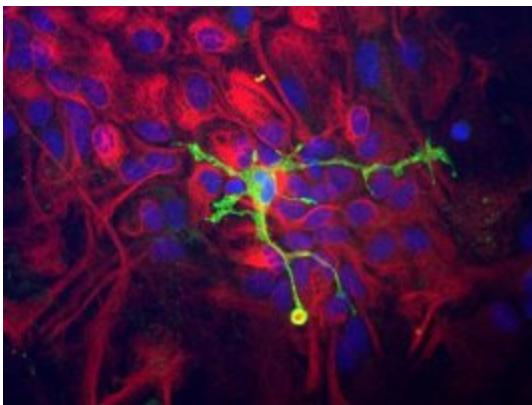
Immunocytochemistry of a mixed neuron/glia culture from newborn rat brain stained with Coronin 1a (green) at a dilution of 1:10,000 and chicken polyclonal Vimentin (1:5,000). Blue is nuclear DNA counter stain. Glial cells and fibroblasts stain with vimentin, while microglia alone stain strongly and specifically for Coronin 1a, which can therefore be used as a robust marker of this important cell type. Protocol on data-sheet



[View online »](#)



Western blot of HL60 Cell extract stained with Coronin 1a, at dilution of 1:10,000. A prominent band running with an apparent SDS-PAGE molecular weight of ~57kDa corresponds to Coronin 1a. Numbers represent positions of molecular weight standards in kDa.



Immunocytochemistry of a mixed neuron/glia culture from newborn rat brain stained with Coronin 1a (green) at a dilution of 1:10,000 and chicken polyclonal Vimentin (1:5,000). Blue is nuclear DNA counter stain. Glial cells and fibroblasts stain with vimentin, while microglia alone stain strongly and specifically for Coronin 1a, which can therefore be used as a robust marker of this important cell type. Protocol on data-sheet



Western blot of HL60 Cell extract stained with Coronin 1a, at dilution of 1:10,000. A prominent band running with an apparent SDS-PAGE molecular weight of ~57kDa corresponds to Coronin 1a. Numbers represent positions of molecular weight standards in kDa.