

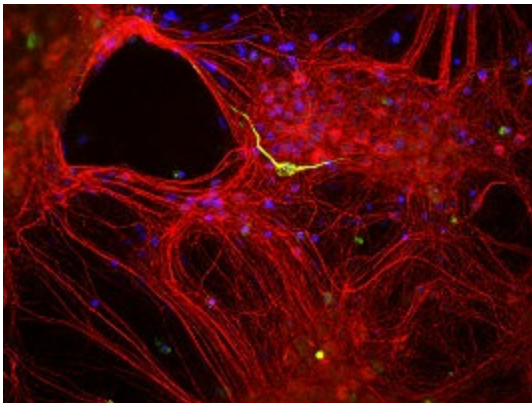
Product datasheet for RA22102-100

alpha Internexin (INA) Rabbit Polyclonal Antibody

Product data:

Product Type:	Primary Antibodies
Applications:	ELISA, IHC, WB
Reactivity:	Human, Mouse, Rat
Host:	Rabbit
Isotype:	IgG
Clonality:	Polyclonal
Formulation:	State: Liquid
Gene Name:	internexin neuronal intermediate filament protein alpha
Database Link:	Entrez Gene 9118 Human
Synonyms:	Alpha-Inx, INA, NEF5, NF66

Product images:



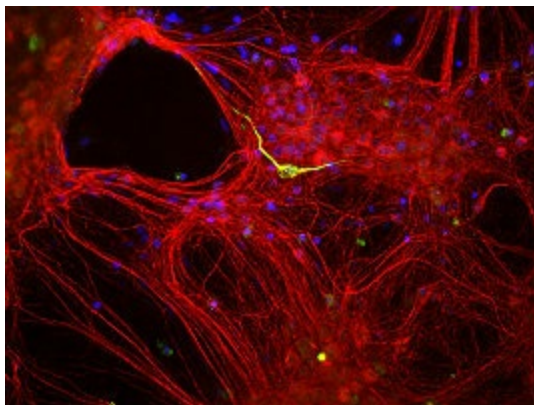
Mixed neuron-glia cultures stained with rabbit antibody to alpha-internexin (red) and chicken antibody to peripherin (green). The alpha internexin antibody stains numerous axonal and dendritic profiles in these cultures, while peripherin antibody binds to only a subset of neurons. Protocol on data-sheet



[View online »](#)



Western blot of whole rat spinal cord homogenate stained with RPCA-a-Int, at dilution of 1:20,000. A prominent band running at ~66kDa is apparent, as well as smaller lower bands which are apparently degradation products. A minor band at ~150kDa is also seen, apparently resulting from dimerization of alpha-internexin. Protocol on datasheet.



Mixed neuron-glia cultures stained with rabbit antibody to alpha-internexin (red) and chicken antibody to peripherin (green). The alpha internexin antibody stains numerous axonal and dendritic profiles in these cultures, while peripherin antibody binds to only a subset of neurons. Protocol on data-sheet



Western blot of whole rat spinal cord homogenate stained with RPCA-a-Int, at dilution of 1:20,000. A prominent band running at ~66kDa is apparent, as well as smaller lower bands which are apparently degradation products. A minor band at ~150kDa is also seen, apparently resulting from dimerization of alpha-internexin. Protocol on datasheet.