

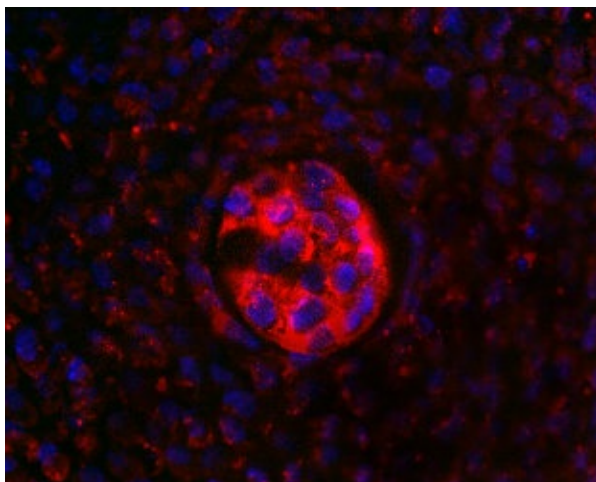
## Product datasheet for RA19023-100

### SOX6 Rabbit Polyclonal Antibody

#### Product data:

Product Type:	Primary Antibodies
Applications:	IHC, WB
Reactivity:	Human, Mouse, Primate, Rat
Host:	Rabbit
Isotype:	IgG
Clonality:	Polyclonal
Formulation:	State: Aff - Purified
Gene Name:	Homo sapiens SRY-box 6 (SOX6), transcript variant 1
Database Link:	<a href="#">Entrez Gene 20679 Mouse</a> <a href="#">Entrez Gene 293165 Rat</a> <a href="#">Entrez Gene 55553 Human</a>
Synonyms:	Transcription factor SOX-6, SRY-box 6, HSSOX6, SOXD
Protein Families:	Transcription Factors

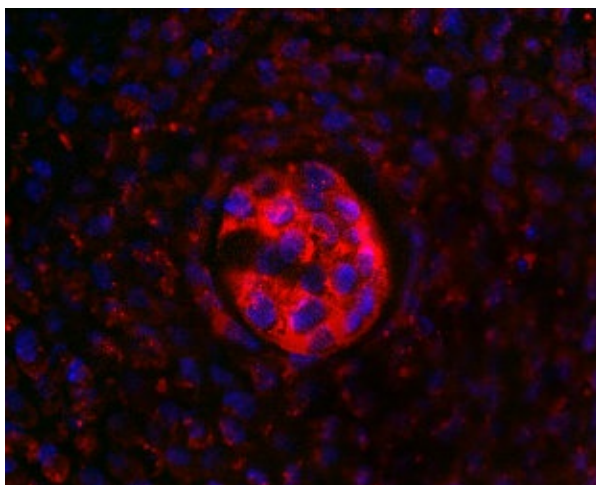
#### Product images:



Labeling for SOX6 in the notochord of 12 d.p.c. mouse embryos. Detection was done using anti-rabbit-Cy3 conjugated secondary antibodies (red fluorescence). Cell nuclei were counterstained with DAPI (blue fluorescence). Mounted with i-BRITE Plus



[View online »](#)



Labeling for SOX6 in the notochord of 12 d.p.c. mouse embryos. Detection was done using anti-rabbit-Cy3 conjugated secondary antibodies (red fluorescence). Cell nuclei were counterstained with DAPI (blue fluorescence). Mounted with i-BRITE Plus