

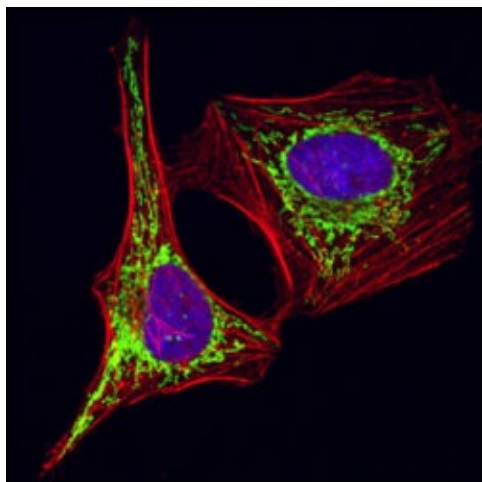
## Product datasheet for RA18029-100

### Hsp60 (HSPD1) Rabbit Polyclonal Antibody

#### Product data:

Product Type:	Primary Antibodies
Applications:	FC, IF, IHC, WB
Reactivity:	Human, Monkey, Mouse, Rat
Host:	Rabbit
Clonality:	Polyclonal
Formulation:	State: Aff - Purified
Gene Name:	Homo sapiens heat shock protein family D (Hsp60) member 1 (HSPD1), transcript variant 1
Database Link:	<a href="#">Entrez Gene 15510 MouseEntrez Gene 63868 RatEntrez Gene 698024 MonkeyEntrez Gene 3329 Human</a>
Synonyms:	HSP-60, HSPD1, Heat shock protein 60, Chaperonin 60, HuCHA60, GROEL, GroEL Homolog, CPN60
Protein Families:	Druggable Genome, Stem cell - Pluripotency
Protein Pathways:	RNA degradation, Type I diabetes mellitus

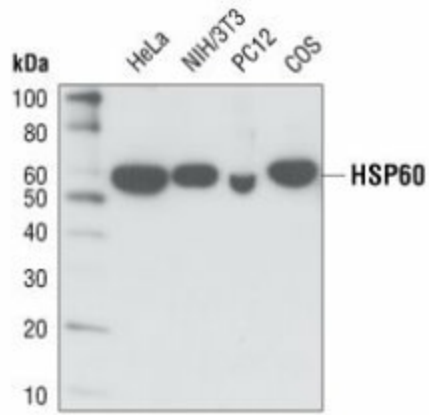
#### Product images:



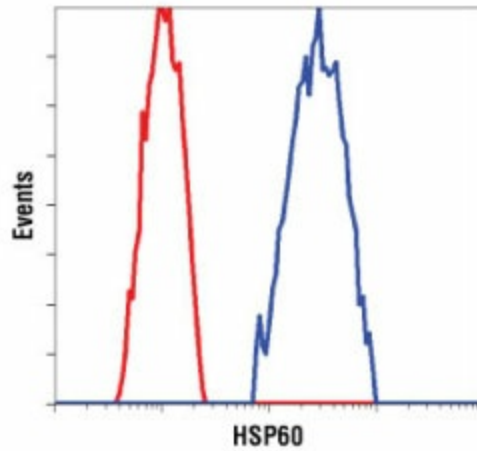
Confocal immunofluorescent analysis of HeLa cells using HSP60 (D307) Antibody (green). Actin filaments have been labeled with Alexa Fluor® 555 phalloidin (red). Blue pseudocolor = DRAQ5™ (fluorescent DNA dye).



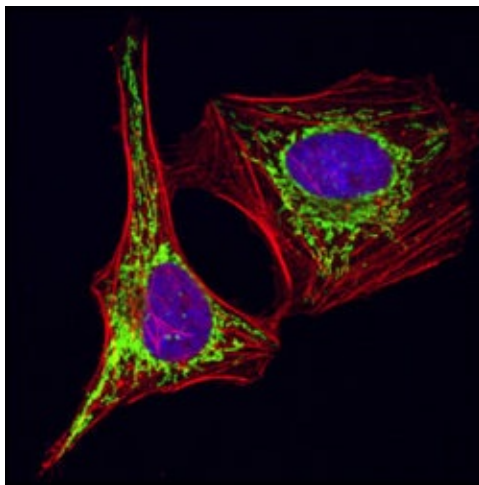
[View online »](#)



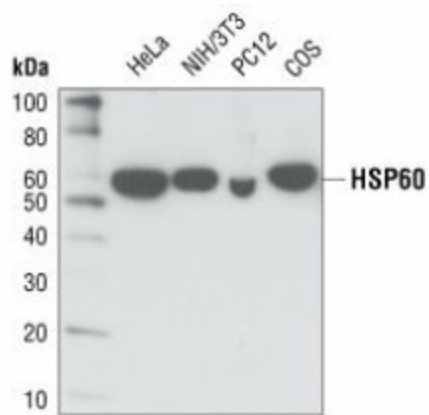
Western blot analysis of extracts from various cell types using HSP60 (D307) Antibody.



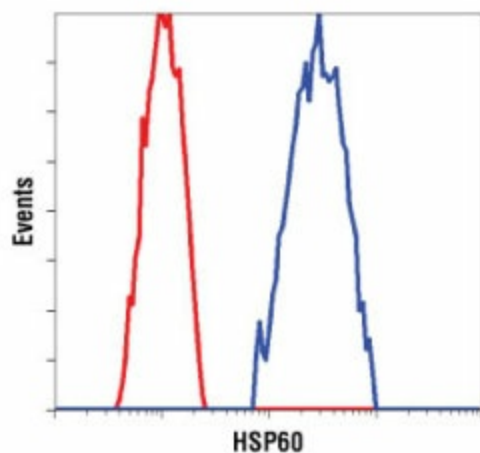
Flow cytometric analysis of HeLa cells using HSP60 (D307) Antibody (blue) compared to a nonspecific negative control antibody (red).



Confocal immunofluorescent analysis of HeLa cells using HSP60 (D307) Antibody (green). Actin filaments have been labeled with Alexa Fluor® 555 phalloidin (red). Blue pseudocolor = DRAQ5™ (fluorescent DNA dye).



Western blot analysis of extracts from various cell types using HSP60 (D307) Antibody.



Flow cytometric analysis of HeLa cells using HSP60 (D307) Antibody (blue) compared to a nonspecific negative control antibody (red).