

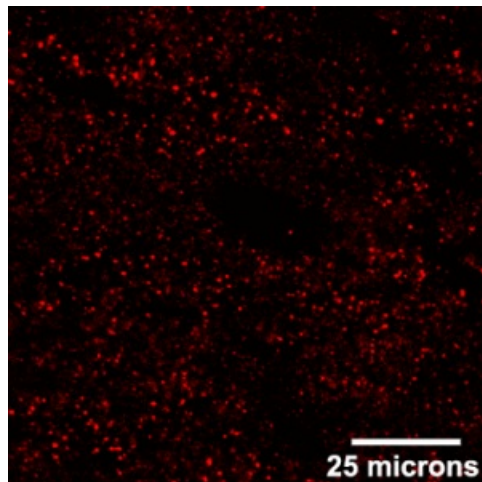
## Product datasheet for RA14131-100

### SPX Rabbit Polyclonal Antibody

#### Product data:

Product Type:	Primary Antibodies
Applications:	IF, IHC
Host:	Rabbit
Clonality:	Polyclonal
Formulation:	State: Serum
Gene Name:	Homo sapiens spexin hormone (SPX), transcript variant 1
Database Link:	<a href="#">Entrez Gene 80763 Human</a>
Synonyms:	C12orf39
Protein Families:	Secreted Protein, Transmembrane

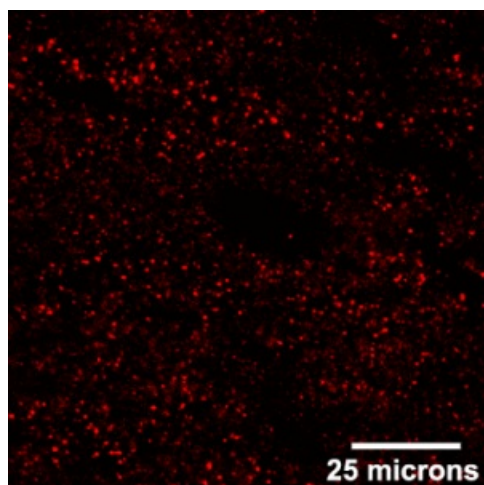
#### Product images:



Detection of neuropeptide Q in rat brain (cortex) using Cy 3-conjugated donkey anti-guinea pig secondary antibodies (red color).



[View online »](#)



Detection of neuropeptide Q in rat brain (cortex) using Cy 3-conjugated donkey anti-guinea pig secondary antibodies (red color).