

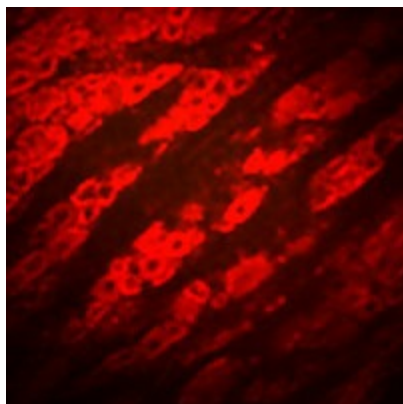
## Product datasheet for RA14103-100

### P2Y2 (P2RY2) Rabbit Polyclonal Antibody

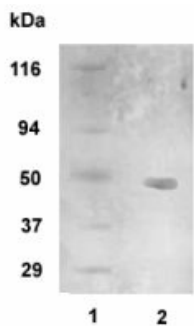
#### Product data:

Product Type:	Primary Antibodies
Applications:	IHC, WB
Reactivity:	Human, Mouse, Rat
Host:	Rabbit
Clonality:	Polyclonal
Formulation:	State: Aff - Purified
Gene Name:	Homo sapiens purinergic receptor P2Y2 (P2RY2), transcript variant 2
Database Link:	<a href="#">Entrez Gene 18442 Mouse</a> <a href="#">Entrez Gene 29597 Rat</a> <a href="#">Entrez Gene 5029 Human</a>
Synonyms:	P2Y purinoceptor 2, P2U purinoceptor 1, P2RU1, P2U1, Purinergic receptor, ATP receptor
Protein Families:	Druggable Genome, GPCR, Transmembrane
Protein Pathways:	Neuroactive ligand-receptor interaction

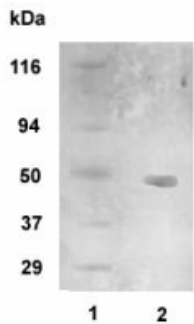
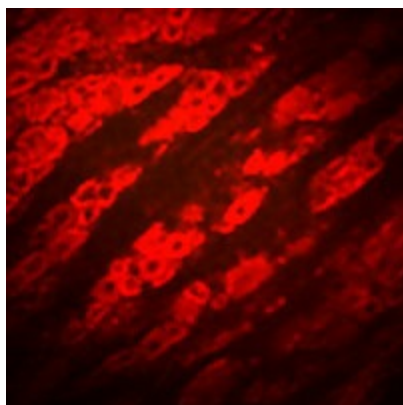
#### Product images:



[View online »](#)



Western blot detection of P2Y2 in 20 ug of human brain lysate (lane 2) with P2Y2 polyclonal at 1:1000 dilution followed by AP-conjugated secondary at 1:5000 dilution. MW marker in Lane 1.



Western blot detection of P2Y2 in 20 ug of human brain lysate (lane 2) with P2Y2 polyclonal at 1:1000 dilution followed by AP-conjugated secondary at 1:5000 dilution. MW marker in Lane 1.