

Product datasheet for RA032S

Normal Rabbit IgG Rabbit Protein

Product data:

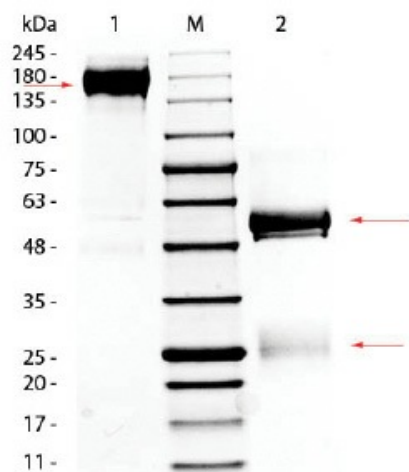
Product Type:	Native Proteins
Description:	Normal Rabbit IgG rabbit protein, 10 mg
Species:	Rabbit
Protein Source:	Serum
Concentration:	lot specific
Buffer:	State: Lyophilized IgG fraction Buffer System: 0.02M Potassium Phosphate, 0.15M Sodium Chloride, pH 7.2 Preservative: 0.01% Sodium Azide Stabilizer: None
Reconstitution Method:	Restore with 1.0 ml of deionized water (or equivalent)
Preparation:	Lyophilized IgG fraction
Applications:	Rabbit IgG whole molecule can be utilized as a control or standard reagent in Western Blotting and ELISA experiments.
Protein Description:	Purified Rabbit IgG Whole Molecule. Native Protein. Rabbit IgG whole molecular was prepared from normal serum by a multi-step process which includes delipidation, salt fractionation and ion exchange chromatography followed by extensive dialysis against the buffer stated above. Rabbit IgG whole molecular was assayed by immunoelectrophoresis resulted in a single precipitin arc against anti-Rabbit IgG and anti-Rabbit Serum.
Storage:	Store lyophilized at 2-8°C for 6 months or at -20°C long term. After reconstitution store the antibody undiluted at 2-8°C for one month or (in aliquots) at -20°C long term. Avoid repeated freezing and thawing.
Stability:	Shelf life: one year from despatch.



[View online »](#)

Summary:

Secreted as part of the adaptive immune response by plasma B cells, immunoglobulin G constitutes 75% of serum immunoglobulins. Immunoglobulin G binds to viruses, bacteria, as well as fungi and facilitates their destruction or neutralization via agglutination (and thereby immobilizing them), activation of the complement cascade, and opsinization for phagocytosis. The whole IgG molecule possesses both the F(c) region, recognized by high-affinity Fc receptor proteins, as well as the F(ab) region possessing the epitope-recognition site. Both heavy and light chains of the antibody molecule are present.

Product images:

SDS-PAGE of Rabbit IgG Whole Molecule. Lane 1: Non-reduced Rabbit IgG Whole Molecule. Lane 2: 5µL OPAL Pre-stained Marker. Lane 3: Reduced Rabbit IgG Whole Molecule. Load: 1µg per lane. Predicted/Observed size: Non-reduced at 150-170 kDa , Reduced at 55, 25 kDa.