

## Product datasheet for R1529

### KLLA0A10417g Goat Polyclonal Antibody

#### Product data:

|                               |                                                                                                                                                                                                                                                                                                                                                                                                                                                                                                                                                                  |
|-------------------------------|------------------------------------------------------------------------------------------------------------------------------------------------------------------------------------------------------------------------------------------------------------------------------------------------------------------------------------------------------------------------------------------------------------------------------------------------------------------------------------------------------------------------------------------------------------------|
| <b>Product Type:</b>          | Primary Antibodies                                                                                                                                                                                                                                                                                                                                                                                                                                                                                                                                               |
| <b>Applications:</b>          | ELISA, IP, WB                                                                                                                                                                                                                                                                                                                                                                                                                                                                                                                                                    |
| <b>Recommended Dilution:</b>  | Suitable for Immunoblotting (Western or Dot blot), ELISA, Immunoprecipitation and most immunological methods requiring high titer and specificity. This product has been assayed against 1.0 ug of Invertase [Candida] in a standard sandwich ELISA using Peroxidase conjugated Affinity Purified anti-Goat IgG [H&L] (Goat) and (ABTS (2,2'-azino-bis-[3-ethylbenthiiazoline-6-sulfonic acid]) as a substrate for 30 minutes at room temperature. A working dilution of 1:10,000 to 1:65,000 of the reconstitution concentration is suggested for this product. |
| <b>Reactivity:</b>            | Candida                                                                                                                                                                                                                                                                                                                                                                                                                                                                                                                                                          |
| <b>Host:</b>                  | Goat                                                                                                                                                                                                                                                                                                                                                                                                                                                                                                                                                             |
| <b>Clonality:</b>             | Polyclonal                                                                                                                                                                                                                                                                                                                                                                                                                                                                                                                                                       |
| <b>Immunogen:</b>             | Invertase from Candida                                                                                                                                                                                                                                                                                                                                                                                                                                                                                                                                           |
| <b>Specificity:</b>           | This product was prepared from monospecific antiserum. Assay by immunoelectrophoresis resulted in a single precipitin arc against purified and partially purified Invertase [Candida]. Cross reactivity against Invertase from other sources is unknown.                                                                                                                                                                                                                                                                                                         |
| <b>Formulation:</b>           | 0.02 M Potassium Phosphate, 0.15 M Sodium Chloride, pH 7.2 with 0.01% (w/v) Sodium Azide as preservative.<br>State: Serum<br>State: Lyophilized purified Ig fraction                                                                                                                                                                                                                                                                                                                                                                                             |
| <b>Reconstitution Method:</b> | Restore with 2.0 ml of deionized water (or equivalent).                                                                                                                                                                                                                                                                                                                                                                                                                                                                                                          |
| <b>Concentration:</b>         | lot specific                                                                                                                                                                                                                                                                                                                                                                                                                                                                                                                                                     |
| <b>Purification:</b>          | Delipidation and defibrination.                                                                                                                                                                                                                                                                                                                                                                                                                                                                                                                                  |
| <b>Conjugation:</b>           | Unconjugated                                                                                                                                                                                                                                                                                                                                                                                                                                                                                                                                                     |
| <b>Storage:</b>               | Store vial at 2-8°C prior to restoration. Restore with 2.0 ml of deionized water (or equivalent). Centrifuge product if not completely clear after standing at room temperature. This product is stable for one month at 2-8°C as an undiluted liquid. Dilute only prior to immediate use. For extended storage aliquot contents and freeze at -20°C or below. Avoid cycles of freezing and thawing.                                                                                                                                                             |



[View online »](#)

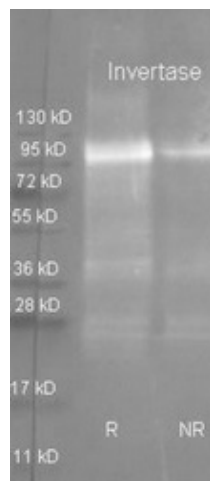
**Stability:** Shelf life: one year from despatch.

**Database Link:** [Q9Y746](#)

**Background:** Invertase hydrolyses the terminal non reducing beta D fructofuranoside residues in beta D fructofuranosides. It is the enzyme that bees use to convert nectar into honey. Industrial and confectionary applications use yeast invertase to split sucrose into fructose and glucose and also to improve the shelf life of food products.

**Synonyms:** Beta-fructofuranosidase, Saccharase, INV1

### Product images:



Goat anti-Invertase antibody was used to detect purified invertase under reducing (R) and non-reducing (NR) conditions. Reduced samples of purified target protein contained 4% BME and were boiled for 5 minutes. Samples of ~1ug of protein per lane were run by SDS-PAGE. Protein was transferred to nitrocellulose and probed with 1/3000 dilution of primary antibody (on 4°C in blocking buffer). Detection shown was using Dylight 488 conjugated donkey anti-goat secondary antibody. Images were collected using the BioRad VersaDoc system.