

Product datasheet for R1388F

Human IgG (H+L chain), Fab Fragment Goat Polyclonal Antibody

Product data:

Product Type:	Secondary Antibodies
Product Name:	Human IgG (H+L chain), Fab Fragment Goat Polyclonal Antibody
Recommended Dilution:	Suitable for Immunomicroscopy and Flow Cytometry or FACS analysis as well as other antibody based fluorescent assays requiring extremely low background levels, absence of F(c) mediated binding, lot-to-lot consistency, high titer and specificity. <u>Recommended Dilutions:</u> FLISA: 1/10,000-1/50,000. Flow Cytometry: 1/500-1/2,500. IF Microscopy: 1/1,000-1/5,000.
Reactivity:	Human
Host:	Goat
Immunogen:	Human IgG whole molecule
Formulation:	0.02M Potassium Phosphate, 0.15M Sodium Chloride, pH 7.2, containing 10 mg/ml BSA (IgG and Protease free) and 0.01% (w/v) Sodium Azide Label: FITC State: Lyophilized Fab fragment Label: Fluorescein isothiocyanate (Molecular Weight 390 daltons) Absorption emission: 495 nm / 528 nm Molar ratio: 4.1 moles FITC per mole of Goat IgG Fab
Reconstitution Method:	Restore with 1.0 ml of deionized water or equivalent.
Concentration:	lot specific
Purification:	Immunoaffinity chromatography using Human IgG coupled to agarose beads followed by solid phase adsorption(s) to remove any unwanted reactivities, papain digestion and chromatographic separation
Conjugation:	FITC



[View online »](#)

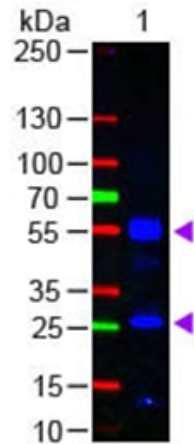
Storage:

Store vial at 2-8°C prior to restoration.

Restore with deionized water (or equivalent); centrifuge product if not completely clear after standing at room temperature. This product is stable for one month at 2-8°C as an undiluted liquid.

For extended storage aliquot contents and freeze at -20°C or below. Avoid repeated freezing and thawing.

Dilute only prior to immediate use.

Product images:


Western Blot of Goat anti-Fab Human IgG (H&L) Antibody Fluorescein Conjugated: Lane 1: Human IgG Load: 50 ng per lane Secondary antibody: Fab Human IgG (H&L) Antibody Fluorescein Conjugated at 1/1,000 for 60 min at RT Block: MB-070 for 30 min at RT Predicted/Observed size: 55 and 28 kDa, 55 and 28 kDa