

## Product datasheet for **R1317AP**

### Goat IgG (H+L chain) Rabbit Polyclonal Antibody

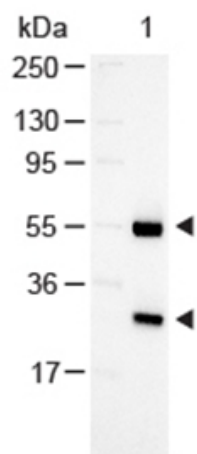
#### Product data:

Product Type:	Secondary Antibodies
Product Name:	Goat IgG (H+L chain) Rabbit Polyclonal Antibody
Applications:	ELISA, IHC, WB
Recommended Dilution:	Suitable for Immunoblotting (Western or Dot blot), ELISA and Immunohistochemistry as well as other phosphatase-antibody based enzymatic assays requiring lot-to-lot consistency. <i>Recommended Dilutions:</i> <b>ELISA:</b> 1/2,000-1/13,000. <b>Western blot:</b> 1/500-1/2,500. <b>Immunohistochemistry:</b> 1/200-1/1,000.
Reactivity:	Goat
Host:	Rabbit
Immunogen:	Goat IgG whole molecule.
Formulation:	0.05M Tris Chloride, 0.15M Sodium Chloride, 0.001M Magnesium Chloride, 0.0001M Zinc Chloride, 50% (v/v) Glycerol, pH 8.0 Label: AP State: Liquid (sterile filtered) purified Ig fraction Stabilizer: 10 mg/ml BSA (IgG and Protease free) Preservative: 0.09% (w/v) Sodium Azide Label: Alkaline Phosphatase (Calf Intestine) (Molecular Weight 140,000 daltons)
Concentration:	lot specific
Purification:	Immunoaffinity Chromatography
Conjugation:	AP
Storage:	Store the antibody undiluted at 2-8°C. <b>DO NOT FREEZE!</b> Freezing alkaline phosphatase conjugates will result in a substantial loss of enzymatic activity. Dilute only prior to immediate use.



[View online »](#)

## Product images:



Western Blot of Rabbit anti-Goat Antibody Alkaline Phosphatase Conjugated:  
Lane 1: Goat IgG, Load: 100 ng per lane  
Secondary antibody Alkaline Phosphatase Conjugated Rabbit Anti-Goat Antibody at 1/1000 for 60 min at RT  
Block: MB-070 30 min RT  
*Predicted/Observed size: 55 and 28 kDa, 55 and 28 kDa*