

## Product datasheet for **R1253HRP**

### Mouse IgG (H+L chain) Rabbit Polyclonal Antibody

#### Product data:

Product Type:	Secondary Antibodies
Product Name:	Mouse IgG (H+L chain) Rabbit Polyclonal Antibody
Applications:	ELISA, IHC, WB
Recommended Dilution:	Suitable for Immunoblotting (Western or Dot blot), ELISA, Immunoperoxidase Electron Microscopy and Immunohistochemistry as well as other peroxidase-antibody based enzymatic assays requiring lot-to-lot consistency. <i>Recommended Dilutions:</i> ELISA : 1:50,000 - 1:300,000 Western Blot : 1:10,000 - 1:30,000 Immunohistochemistry: 1:500 - 1:2,500 Other Dilution: User Optimized
Reactivity:	Mouse
Host:	Rabbit
Immunogen:	Mouse IgG whole molecule.
Formulation:	0.02M Potassium Phosphate, 0.15M Sodium Chloride, pH 7.2 Label: HRP State: Lyophilized purified Ig fraction Stabilizer: 10 mg/ml BSA (IgG and Protease free) Preservative: 0.01% (w/v) Gentamicin Sulfate Label: Horseradish Peroxidase <b>Conjugation Chemistry:</b> Periodate
Reconstitution Method:	Reconstitute with 1.0 ml of deionized water (or equivalent).
Concentration:	2.0 mg/ml (by UV absorbance at 280 nm)
Purification:	Immunoaffinity Chromatography using Mouse IgG coupled to agarose beads
Conjugation:	HRP



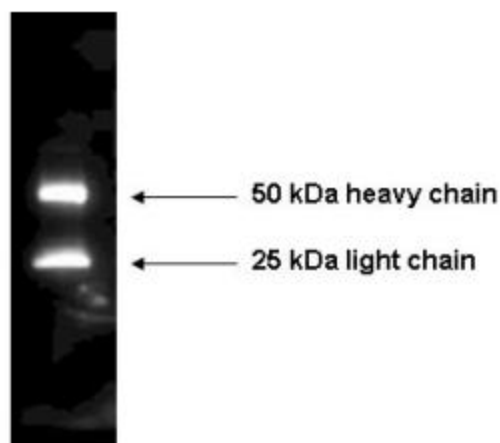
[View online »](#)

**Storage:**

Store vial at 2-8°C prior to restoration. Centrifuge product if not completely clear after standing at room temperature. This product is stable for one month at 2-8°C as an undiluted liquid.

For extended storage aliquot and freeze at -20°C or below.

Avoid cycles of freezing and thawing! Dilute only prior to immediate use!

**Product images:**

Western Blot of Mouse IgG Antibody Peroxidase Conjugated detecting mouse IgG. Mouse IgG (1.0 mg) was separated on a 4-20% gradient gel and then transferred to Whatman Protran BA 85 nitrocellulose (0.45  $\mu$ m pore size) and blocked with 5% BLOTTO (p/n [B501-0500]) o/n at 4°C. The membrane was then probed with a 1/2,500 dilution of HRP Rabbit anti-Mouse IgG [H&L] R1253HRP for 45 min at RT. FemtoMax Super Sensitive Chemiluminescent HRP Substrate Was added and the image was captured using a BioSpectrum Imaging System with a BioChemi 500 -28C cooled 4.0 Megapixel CCD Camera from UVP (www.uvp.com, Upland, CA). Binning: 5X5. Exposure time: 2 min. Aperture open. No emission or excitation filters used.