

Product datasheet for R1181

6xHistidine Epitope Tag (HHHHHH) Rabbit Polyclonal Antibody

Product data:

Product Type:	Primary Antibodies
Applications:	ELISA, IHC, WB
Recommended Dilution:	Anti-6X His is optimally suited for monitoring expression of His-tagged fusion proteins. This antibody has been tested by ELISA and western blotting against both the immunizing peptide and His-containing recombinant proteins. Although not tested, this antibody is likely functional for Immunoprecipitation and Immunocytochemistry. <i>Recommended Dilutions:</i> ELISA: 1/10,000-1/40,000. Western blot: 1/500-1/1,000. Immunohistochemistry: 1/500-1/2,000.
Host:	Rabbit
Clonality:	Polyclonal
Immunogen:	6X His epitope tag peptide H-H-H-H-H-H conjugated to KLH using maleimide
Specificity:	This polyclonal anti-6X His tag antibody detects over-expressed proteins containing the 6X His epitope tag. To date, this antibody has reacted with all His tagged proteins so far tested. In western blotting of bacterial extracts, the antibody does not cross-react with endogenous proteins. The antibody recognizes the His tag fused either to the amino- or carboxy-termini of targeted proteins.
Formulation:	0.02M Potassium Phosphate, 0.15M Sodium Chloride, pH 7.2 State: Aff - Purified State: Liquid (sterile filtered) purified Ig fraction. Stabilizer: None Preservative: 0.01% (w/v) Sodium Azide
Concentration:	lot specific
Purification:	Affinity Chromatography
Conjugation:	Unconjugated
Storage:	Store undiluted at 2-8°C for one month or (in aliquots) at -20°C for longer. Avoid repeated freezing and thawing.
Stability:	Shelf life: one year from despatch.



[View online »](#)

Background:

Epitope tags are short peptide sequences that are easily recognized by tag-specific antibodies. Due to their small size, epitope tags do not affect the tagged protein's biochemical properties. Most often sequences encoding the epitope tag are included with target DNA at the time of cloning to produce fusion proteins containing the epitope tag sequence. This allows anti-epitope tag antibodies to serve as universal detection reagents for any tag containing protein produced by recombinant means. This means that anti-epitope tag antibodies are a useful alternative to generating specific antibodies to identify, immunoprecipitate or immunoaffinity purify a recombinant protein. The anti-epitope tag antibody is usually functional in a variety of antibody-dependent experimental procedures.

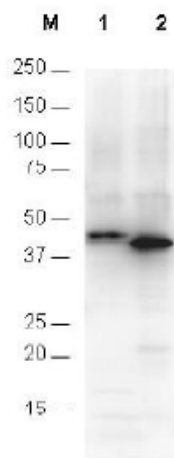
Product images:

Figure 1. Anti-6X His epitope tag polyclonal antibody detects His-tagged recombinant proteins by western blot. The blot was blocked with 3% BSA in TBST for 45 min at RT. Antibody was incubated with blot at a 1/1,000 dilution in TBST with 3% BSA for 1 hour