

Product datasheet for R1157PS

pgmB Goat Polyclonal Antibody

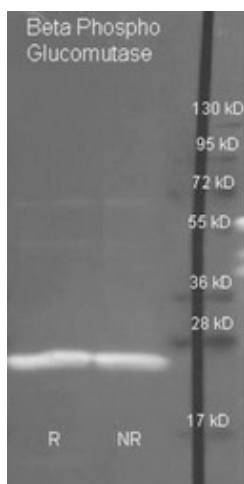
Product data:

Product Type:	Primary Antibodies
Applications:	ELISA, WB
Recommended Dilution:	Western blot: 1/500-1/3000. ELISA: 1/1,000-1/5,000 dilution suggested to begin optimization. This product has been assayed against 1.0 µg of beta-phosphoglucomutase [<i>actococcus lacti</i>] in a standard Sandwich ELISA using peroxidase conjugated affinity purified anti-goat IgG [H&L] (Rabbit) and ABTS as a substrate for 30 minutes at room temperature. A working dilution of 1/15,000 to 1/60,000 of the reconstitution concentration is suggested.
Reactivity:	Lactococcus lacti
Host:	Goat
Clonality:	Polyclonal
Immunogen:	Beta-phosphoglucomutase (PGMB) from <i>Lactococcus lacti</i>
Specificity:	This antibody detects beta-phosphoglucomutase from <i>Lactococcus lacti</i> . Immuno-electrophoresis gives a single precipitin arc against anti-Goat serum as well as purified and partially purified beta-phosphoglucomutase [<i>Lactococcus lacti</i>]. Cross reactivity against b-Phosphoglucomutase from other sources is unknown.
Formulation:	0.02 M Potassium phosphate, 0.15 M Sodium chloride, pH 7.2 State: Purified State: Lyophilized purified Ig fraction Stabilizer: None Preservative: 0.01% Sodium Azide
Reconstitution Method:	Restore with 0.1 ml of deionized water (or equivalent).
Concentration:	lot specific
Purification:	Multistep process including delipidation, salt fractionation and ion exchange chromatography followed by extensive dialysis against the buffer
Conjugation:	Unconjugated



[View online »](#)

Storage:	Store lyophilized at 2-8°C for 6 months or at -20°C long term. After reconstitution store the antibody undiluted at 2-8°C for one month or (in aliquots) at -20°C long term. Avoid repeated freezing and thawing.
Stability:	Shelf life: one year from despatch.
Database Link:	P71447
Synonyms:	Beta-phosphoglucomutase, Beta-PGM, Phosphoglucomutase beta, Glucose Phosphomutase
Note:	<i>Conjugates available. Please ask for details.</i>

Product images:

Goat anti Beta phosphoglucomutase antibody was used to detect purified Beta phosphoglucomutase under reducing (R) and non-reducing (NR) conditions. Reduced samples of protein contained 4% BME and were boiled for 5 minutes. Samples of ~1ug of protein per lane were run by SDS-PAGE. Protein was transferred to nitrocellulose and probed with 1/3000 dilution of primary antibody. Detection shown was using Dylight 488 conjugated donkey anti goat 1/10K in TBS/blocking buffer 1 hr RT). Images were collected using the BioRad VersaDoc System.