

Product datasheet for R1149

Glucoamylase 1 Goat Polyclonal Antibody

Product data:

Product Type:	Primary Antibodies
Applications:	ELISA, IP, WB
Recommended Dilution:	Western blot: 1/500-1/3,000. ELISA: 1/5,000-1/25,000. This product has been assayed against 1.0 µg of Glucoamylase [Rhizopus] in a standard ELISA using peroxidase conjugated affinity purified anti-goat IgG (rabbit) and ABTS as a substrate for 30 minutes at room temperature. A working dilution of 1/20,000 to 1/100,000 of the reconstitution concentration is suggested.
Reactivity:	Rhizopus
Host:	Goat
Clonality:	Polyclonal
Immunogen:	Glucoamylase from Rhizopus
Specificity:	This antibody detects Rhizopus Glucoamylase. Cross reactivity against Glucoamylase from other sources is unknown. Assay by immunoelectrophoresis resulted in a single precipitin arc against purified and partially purified Glucoamylase from Rhizopus.
Formulation:	0.02 M Potassium phosphate, 0.15 M Sodium chloride, pH 7.2 State: Serum State: Lyophilized purified Ig fraction Preservative: 0.01% (w/v) Sodium azide
Reconstitution Method:	Restore with 2.0 ml of deionized water (or equivalent).
Concentration:	lot specific
Purification:	Prepared from monospecific antiserum by a delipidation and defibrination.
Conjugation:	Unconjugated
Storage:	Store lyophilized at 2-8°C for 6 months or at -20°C long term. After reconstitution store the antibody undiluted at 2-8°C for one month or (in aliquots) at -20°C long term. Avoid repeated freezing and thawing.
Stability:	Shelf life: one year from despatch.



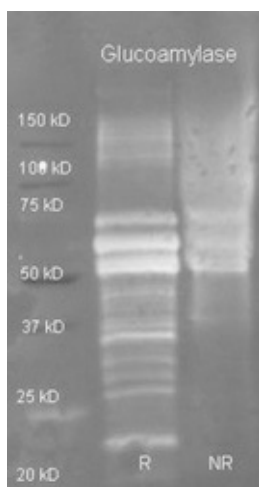
[View online »](#)

Database Link: [P07683](#)

Background: Glucoamylase is an important industrial enzyme used in saccharification steps in both starch enzymatic conversion and in alcohol production. The catalytic domain degrades oligosaccharides from the non reducing end, releasing glucose, and the starch domain binds the enzyme to raw starch and to the cell wall.

Synonyms: Gluc 1

Product images:



Goat anti Glucoamylase antibody (R1149, lot 7844) was used to detect purified glucoamylase under reducing (R) and non-reducing (NR) conditions. Reduced samples of purified target proteins contained 4% BME and were boiled for 5 minutes. Samples of ~1g of pr