

## Product datasheet for **R1111HRPS**

### SOD1 Rabbit Polyclonal Antibody

#### Product data:

Product Type:	Primary Antibodies
Applications:	ELISA, WB
Recommended Dilution:	<b>ELISA:</b> 1/5,000-1/20,000. <b>Western blot:</b> 1/500-1/2,000. This product has been assayed against 1.0 µg of Superoxide Dismutase [bovine erythrocytes] in a standard capture ELISA using ABTS as a substrate for 30 minutes at room temperature. A working dilution of 1/1,000 to 1/2,000 of the reconstitution concentration is suggested.
Reactivity:	Bovine
Host:	Rabbit
Isotype:	IgG
Clonality:	Polyclonal
Immunogen:	Superoxide Dismutase from Bovine erythrocytes
Specificity:	This antibody detects bovine Superoxide Dismutase. Cross reactivity against Superoxide Dismutase from other tissues and species may occur but have not been specifically determined Immunoelectrophoresis give a single precipitin arc against anti-peroxidase, anti-rabbit serum as well as purified and partially purified Superoxide Dismutase [bovine erythrocytes].
Formulation:	0.02 M Potassium phosphate, 0.15 M Sodium chloride, pH 7.2 Label: HRP State: Purified State: Lyophilized purified Ig fraction Stabilizer: 10 mg/ml BSA (immunoglobulin and protease free) Preservative: 0.01% (w/v) Gentamycin sulfate (Do NOT add Sodium azide!) Label: Horseradish peroxidase
Reconstitution Method:	Restore with 0.1 ml of deionized water (or equivalent).
Concentration:	lot specific
Purification:	Delipidation, salt fractionation and ion exchange chromatography followed by extensive dialysis against the buffer
Conjugation:	HRP



[View online »](#)

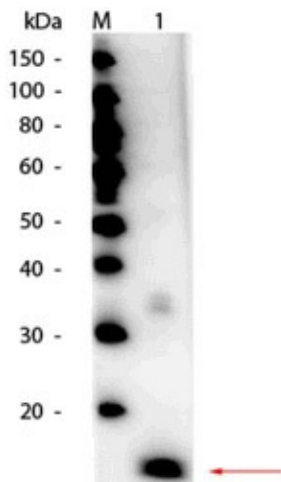
**Storage:** Store lyophilized at 2-8°C for 6 months or at -20°C long term.  
After reconstitution store the antibody undiluted at 2-8°C for one month or (in aliquots) at -20°C long term. Avoid repeated freezing and thawing.

**Stability:** Shelf life: one year from despatch.

**Database Link:** [Entrez Gene 281495 Bovine P00442](#)

**Synonyms:** SOD-1, CuZn-SOD, CuZnSOD, IPOA, ALS1

### Product images:



Western blot of HRP conjugated Superoxide Dismutase antibody. Lane 1: Superoxide Dismutase load: 50 ng per lane. Primary antibody: HRP conjugated Superoxide Dismutase antibody at 1/1,000 overnight at 4°C. Secondary antibody: none; HRP substrate. Predicted/observed size: 15.6 kDa, 15.6 kDa.