

Product datasheet for **R1109HRPS**

RNASE1 Rabbit Polyclonal Antibody

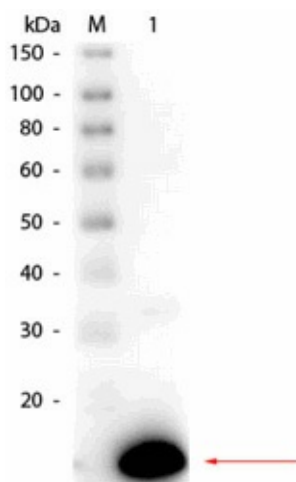
Product data:

Product Type:	Primary Antibodies
Applications:	ELISA, IP, WB
Recommended Dilution:	Western Blot : 1/500 - 1/2,500. Immunoprecipitation : 1/100. ELISA : 1/10,000 - 1/40,000. This product has been assayed against 1.0 µg of Ribonuclease A [bovine pancreas] in a standard capture ELISA using ABTS as a substrate for 30 minutes at room temperature. A working dilution of 1/1,000 to 1/5,000 is suggested.
Reactivity:	Bovine
Host:	Rabbit
Clonality:	Polyclonal
Immunogen:	Ribonuclease A from bovine pancreas
Specificity:	This antibody detects bovine RNASE1. Cross reactivity against Ribonuclease A from other tissues and species may occur but have not been specifically determined. Assay by immunoelectrophoresis resulted in a single precipitin arc against anti-peroxidase, anti-rabbit serum as well as purified and partially purified Ribonuclease A [bovine pancreas].
Formulation:	0.02 M Potassium phosphate, 0.15 M Sodium chloride, pH 7.2 Label: HRP State: Purified State: Lyophilized purified Ig fraction Stabilizer: 10 mg/m BSA (immunoglobulin and protease free) Preservative: 0.01% (w/v) Gentamicin sulfate (Do NOT add Sodium azide!) Label: Horseradish peroxidase
Reconstitution Method:	Restore with 0.1 ml of deionized water (or equivalent).
Concentration:	lot specific
Purification:	Delipidation, salt fractionation and ion exchange chromatography followed by extensive dialysis against the buffer
Conjugation:	HRP



[View online »](#)

Storage:	Store lyophilized at 2-8°C for 6 months or at -20°C long term. After reconstitution store the antibody undiluted at 2-8°C for one month or (in aliquots) at -20°C long term. Avoid repeated freezing and thawing.
Stability:	Shelf life: one year from despatch.
Database Link:	Entrez Gene 282340 Bovine P61823
Synonyms:	Ribonuclease 1, RNase 1, Ribonuclease A, RNase A, RIB1, RIB-1, RNS1, Ribonuclease pancreatic

Product images:

Western blot of rabbit anti-Ribonuclease A antibody peroxidase conjugated. Lane 1: Ribonuclease A (bovine pancreas). Load: 50 ng per lane. Primary antibody: Rabbit anti-Ribonuclease A antibody peroxidase conjugated at 1/1,000 overnight at 4°C. Secondary antibody: n/a. Blocking buffer for 30 min at RT. Predicted/Observed size: 16.5 kDa, 16.5 kDa for Ribonuclease A.