

Product datasheet for **R1101HRPS**

OVAL Rabbit Polyclonal Antibody

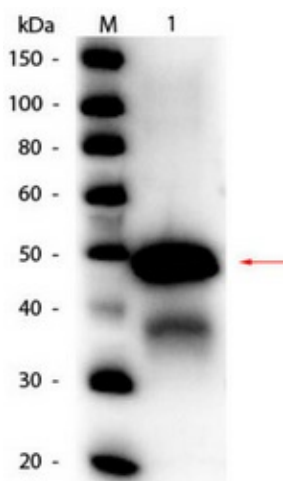
Product data:

Product Type:	Primary Antibodies
Applications:	ELISA, IHC, IP, WB
Recommended Dilution:	ELISA: 1/5,000-1/25,000. Western blot: 1/1,000-1/5,000. Immunohistochemistry: 1/500-1/2,500. Immunoprecipitation: 1/100.
Reactivity:	Chicken
Host:	Rabbit
Clonality:	Polyclonal
Immunogen:	Native Ovalbumin from hen egg white
Specificity:	This antibody detects Chicken (<i>Gallus gallus</i>) Ovalbumin. Cross reactivity against Ovalbumin from other tissues and species may occur but have not been specifically determined. Immunoelectrophoresis give a single precipitin arc against anti-peroxidase, anti-rabbit serum as well as purified and partially purified Ovalbumin [hen egg white].
Formulation:	0.02M Potassium phosphate, 0.15M Sodium chloride, pH 7.2 Label: HRP State: Purified State: Lyophilized purified IgG fraction Stabilizer: 10 mg/ml BSA (immunoglobulin and protease free) Preservative: 0.01% (w/v) Gentamicin sulfate (Do NOT add Sodium azide!) Label: Horseradish peroxidase
Reconstitution Method:	Restore with 0.1 ml of deionized water (or equivalent).
Concentration:	lot specific
Purification:	Delipidation, salt fractionation and ion exchange chromatography followed by extensive dialysis against the buffer
Conjugation:	HRP

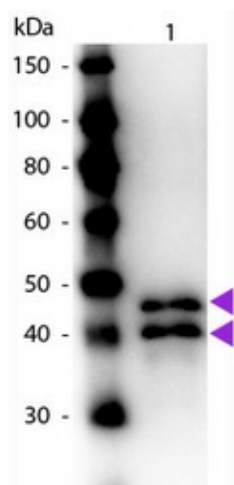


[View online »](#)

Storage:	Store lyophilized at 2-8°C for 6 months or at -20°C long term. After reconstitution store the antibody undiluted at 2-8°C for one month or (in aliquots) at -20°C long term. Avoid repeated freezing and thawing.
Stability:	Shelf life: one year from despatch.
Gene Name:	ovalbumin (SERPINB14)
Database Link:	Entrez Gene 396058 Chicken P01012
Background:	Chicken Ovalbumin is the major protein in the "white" of the egg (and a favorite antigen in immunological research). Egg white contains a variety of proteins including ovalbumin, conalbumin, ovomucoid and lysozyme. It belongs to the serpin family and the Ov serpin subfamily. Ovalbumin can cause an allergic reaction in humans. Ovalbumin has been implicated in the development of the egg shell. Immunohistochemistry revealed that ovalbumin is found only in the mammillary bodies of decalcified shell, and is not distributed throughout the shell matrix. These results indicate that ovalbumin is present during the initial phase of shell formation and becomes incorporated into the protein matrix of the mammillary bodies. However, it is not yet clear whether ovalbumin at this site plays a specific role in shell mineralisation.
Synonyms:	SERPINB14, Egg albumin, Plakalbumin, Allergen Gal d II

Product images:

Western blot of rabbit anti-Ovalbumin peroxidase conjugated antibody. Lane 1: Ovalbumin (hen egg). Load: 50 ng per lane. Primary antibody: Rabbit anti-Ovalbumin peroxidase conjugated antibody at 1/1,000 overnight at 4°C. Secondary antibody: none. Blocking buffer for 30 min at RT. Predicted/observed size: 43 kDa for Ovalbumin. Other band (s): Ovalbumin splice variants and isoforms.



Western blot of rabbit anti-Ovalbumin peroxidase conjugated antibody. Lane 1: Ovalbumin. Load: 50 ng per lane. Primary antibody: Rabbit anti-Ovalbumin peroxidase conjugated antibody at 1/1,000 overnight at 4°C. Secondary antibody: none. Blocking buffer for 30 min at RT. Predicted/observed size: 43 kDa for Ovalbumin. Other band (s): Ovalbumin splice variants and isoforms.