

## Product datasheet for **R1074PS**

### Choline oxidase Goat Polyclonal Antibody

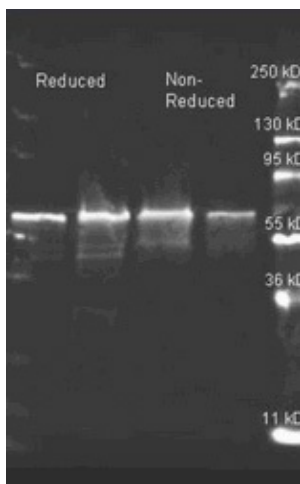
#### Product data:

Product Type:	Primary Antibodies
Applications:	ELISA, IP, WB
Recommended Dilution:	<b>Western blot:</b> 1/500-1/5,000. <b>Immunoprecipitation:</b> 1/100. <b>ELISA:</b> 1/5000-1:20,000. This product has been assayed against 1.0 µg of Choline oxidase [Alcaligenes spec.] in a standard sandwich ELISA using peroxidase conjugated affinity purified anti-Goat IgG and ABTS as a substrate for 30 minutes at room temperature. A working dilution of 1/4,000 to 1/22,000 of the reconstitution concentration is suggested for this product.
Reactivity:	Alcaligenes
Host:	Goat
Clonality:	Polyclonal
Immunogen:	Choline oxidase from Alcaligenes spec.
Specificity:	This product detects Choline oxidase from Alcaligenes spec. Cross reactivity against Choline Oxidase from other sources is unknown. Immunoelectrophoresis give a single precipitin arc against anti-goat serum as well as purified and partially purified Choline Oxidase [Alcaligenes spec.].
Formulation:	0.02 M Potassium phosphate, 0.15 M Sodium chloride, pH 7.2 State: Purified State: Lyophilized purified Ig fraction Preservative: 0.01% (w/v) Sodium azide
Reconstitution Method:	Restore with 0.1 ml of deionized water (or equivalent).
Concentration:	lot specific
Purification:	Delipidation, salt fractionation and ion exchange chromatography followed by extensive dialysis against the buffer
Conjugation:	Unconjugated



[View online »](#)

<b>Storage:</b>	Store lyophilized at 2-8°C for 6 months or at -20°C long term. After reconstitution store the antibody undiluted at 2-8°C for one month or (in aliquots) at -20°C long term. Avoid repeated freezing and thawing.
<b>Stability:</b>	Shelf life: one year from despatch.
<b>Database Link:</b>	<a href="#">P16101</a>
<b>Background:</b>	Choline oxidase catalyzes the oxidation of choline and betaine aldehyde to betaine with concomitant consumption of oxygen and production of hydrogen peroxide.

**Product images:**

Goat anti Choline oxidase antibody was used to detect Choline Oxidase. Samples of ~1 and 0.25 g of purified Choline oxidase per lane were run by SDS-PAGE under reducing and non-reducing conditions and reduced samples of purified Choline oxidase contained 4