

Product datasheet for R1072

PRC1 Rabbit Polyclonal Antibody

Product data:

Product Type:	Primary Antibodies
Applications:	ELISA, IP, WB
Recommended Dilution:	Suitable for Immunoblotting (Western or Dot blot), ELISA, Immunoprecipitation and most immunological methods requiring high titer and specificity. <u>Recommended Dilutions:</u> This product has been assayed against 1.0 ug of Carboxypeptidase Y [Baker's Yeast] in a standard sandwich ELISA using Peroxidase conjugated Affinity Purified anti-Rabbit IgG [H&L] (Goat) and ABTS (2,2'-azino-bis-[3-ethylbenthiazoline-6-sulfonic acid]) as a substrate for 30 minutes at room temperature. A working dilution of 1:1,000 to 1:3,000 of the reconstitution concentration is suggested for this product.
Reactivity:	Bakers Yeast
Host:	Rabbit
Clonality:	Polyclonal
Immunogen:	Carboxypeptidase Y [Baker's Yeast].
Specificity:	Assay by immunoelectrophoresis resulted in a single precipitin arc against purified and partially purified Carboxypeptidase Y [Baker's Yeast]. Cross reactivity against Carboxypeptidase Y from other tissues and species may occur but have not been specifically determined.
Formulation:	0.02 M Potassium Phosphate, 0.15 M Sodium Chloride, pH 7.2 with 0.01% sodium azide as preservative. State: Serum State: Lyophilized Serum
Reconstitution Method:	Restore with 2.0 ml of deionized water (or equivalent).
Concentration:	lot specific
Purification:	Prepared from monospecific antiserum by a delipidation and defibrination.
Conjugation:	Unconjugated

[View online »](#)

Storage:	<p>Store vial at 2-8°C prior to restoration. Centrifuge product if not completely clear after standing at room temperature. For extended storage aliquot contents and freeze at -20°C or below.</p> <p>This product is stable for one month at 2-8°C as an undiluted liquid.</p> <p>Dilute only prior to immediate use.</p> <p>Avoid cycles of freezing and thawing.</p>
Stability:	Shelf life: One year from despatch.
Database Link:	P00729
Background:	Carboxypeptidase Y is involved in degradation of small peptides. Digests preferentially peptides containing an aliphatic or hydrophobic residue in P1' position, as well as methionine, leucine or phenylalanine in P1 position of ester substrate.
Synonyms:	Carboxypeptidase YSCY, PRC1
Product images:	

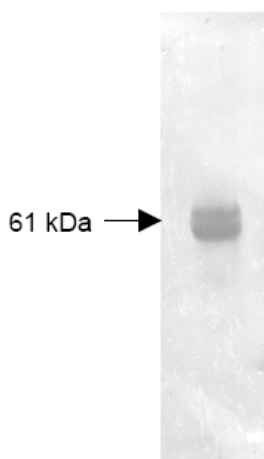


Figure 1. Both the antiserum and IgG fractions of anti-Carboxypeptidase Y (Baker's Yeast) are shown to detect under reducing conditions of SDS-PAGE the 61,000 dalton enzyme in cellular extracts. Approximately 10 ug of total protein is loaded per lane. A 1:5,000 dilution of the primary antibody is used followed by detection using HRP Goat-a-Rabbit IgG [H&L] diluted 1:4,000 and color development using 4-CN substrate until sufficient color develops. Other detection systems will yield similar results.