

Product datasheet for R1071PS

CPB1 Rabbit Polyclonal Antibody

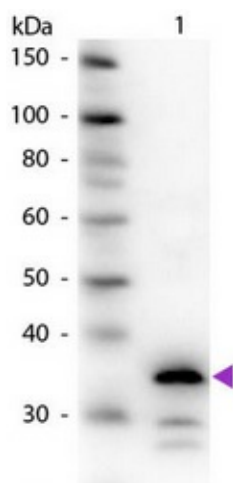
Product data:

| | |
|------------------------|--|
| Product Type: | Primary Antibodies |
| Applications: | ELISA, IHC, WB |
| Recommended Dilution: | Western blot: 1/500-1/2,000 ELISA: 1/2,000-1/10,000 This product has been assayed against 1.0 µg of Carboxypeptidase B [porcine pancreas] in a standard capture ELISA using ABTS as a substrate for 30 minutes at room temperature. A working dilution of 1/1,000-1/3,000 of the reconstitution concentration is suggested. Immunohistochemistry with Paraffin and Frozen sections: 1/250-1/1,000. |
| Reactivity: | Porcine |
| Host: | Rabbit |
| Clonality: | Polyclonal |
| Immunogen: | Carboxypeptidase B from porcine pancreas. |
| Specificity: | This product detects porcine Carboxypeptidase B. Cross reactivity against Carboxypeptidase B from other tissues and species is unknown. Immunoelectrophoresis give a single precipitin arc against anti-rabbit Serum as well as purified and partially purified Carboxypeptidase B [porcine pancreas]. |
| Formulation: | 0.02M Potassium phosphate, 0.15M Sodium chloride, pH 7.2 State: Purified State: Lyophilized purified IgG fraction Stabilizer: None Preservative: 0.01% (w/v) Sodium azide |
| Reconstitution Method: | Restore with 0.1 ml deionized water (or equivalent). |
| Concentration: | lot specific |
| Purification: | Delipidation, salt fractionation and ion exchange chromatography followed by extensive dialysis against the buffer |
| Conjugation: | Unconjugated |



[View online »](#)

| | |
|-----------------------|---|
| Storage: | Store lyophilized at 2-8°C for 6 months or at -20°C long term. After reconstitution store the antibody undiluted at 2-8°C for one month or (in aliquots) at -20°C long term. Avoid repeated freezing and thawing. |
| Stability: | Shelf life: one year from despatch. |
| Database Link: | P09955 |
| Background: | Carboxypeptidase catalyzes the hydrolysis of the basic amino acids lysine, arginine and ornithine from the C terminal position in polypeptides. It occurs as a zymogen in the pancreas in most vertebrates. |
| Synonyms: | CPB1, CPB, PCPB, Pancreas-specific protein, PASP |

Product images:

Western blot of rabbit anti-Carboxypeptidase B antibody. Lane 1: Carboxypeptidase B. Lane 2: None. Load: 50 ng per lane. Primary antibody: Carboxypeptidase B primary antibody at 1/1,000 overnight at 4°C. Secondary antibody: Peroxidase rabbit secondary antibody at 1/40,000 for 30 min at RT. Blocking buffer for 30 min at RT. Predicted/Observed size: 35 kDa, 35 kDa for Carboxypeptidase B. Other band (s): Carboxypeptidase B splice variants and isoforms.