

Product datasheet for **R1066PS**

Bilirubin oxidase Goat Polyclonal Antibody

Product data:

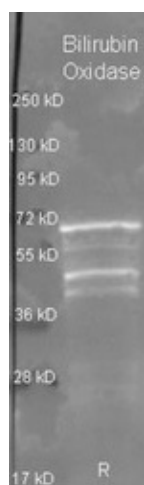
Product Type:	Primary Antibodies
Applications:	ELISA, IP, WB
Recommended Dilution:	Western blot: 1/500-1/5,000. Immunoprecipitation: 1/100. ELISA: 1/5,000-1/20,000. This product has been assayed against 1.0 µg of Bilirubin oxidase [<i>Myrothecium verrucaria</i>] in a standard sandwich ELISA using peroxidase conjugated affinity purified anti-goat IgG (goat) and ABTS as a substrate for 30 minutes at room temperature. A working dilution of 1:2,000 to 1:10,000 of the reconstitution concentration is suggested.
Reactivity:	Myrothecium
Host:	Goat
Clonality:	Polyclonal
Immunogen:	Bilirubin oxidase from <i>Myrothecium verrucaria</i>
Specificity:	This antibody detects Bilirubin oxidase [<i>Myrothecium verrucaria</i>]. Cross reactivity against Bilirubin oxidase from other sources is unknown. Assay by immunoelectrophoresis resulted in a single precipitin arc against anti-goat serum as well as purified and partially purified Bilirubin oxidase [<i>Myrothecium verrucaria</i>].
Formulation:	0.02 M Potassium phosphate, 0.15 M Sodium chloride, pH 7.2 State: Purified State: Lyophilized purified Ig fraction Preservative: 0.01% (w/v) Sodium azide
Reconstitution Method:	Restore with 0.1 ml of deionized water (or equivalent).
Concentration:	lot specific
Purification:	Delipidation, salt fractionation and ion exchange chromatography followed by extensive dialysis against the buffer
Conjugation:	Unconjugated



[View online »](#)

- Storage:** Store lyophilized at 2-8°C for 6 months or at -20°C long term.
After reconstitution store the antibody undiluted at 2-8°C for one month or (in aliquots) at -20°C long term.
Avoid repeated freezing and thawing.
- Stability:** Shelf life: one year from despatch.
- Database Link:** [Q12737](#)
- Background:** Bilirubin Oxidase is an enzyme that catalyses the oxidation of bilirubin to biliverdin and other substrates. This enzyme has been expected to be used in the field of clinical pathology for the enzymatic determination of total bilirubin in serum and the treatment of jaundice and hyperbilirubinemia.

Product images:



Rockland goat anti Bilirubin oxidase antibody Cat.-No. [R1066P] (Lot 6533) was used to detect Bilirubin oxidase under reducing (R) conditions. A samples of ~1g of purified protein contained 4% BME and was boiled for 5 minutes and run by SDS-PAGE on a 4-20% a