

Product datasheet for R1066BS

Bilirubin oxidase Goat Polyclonal Antibody

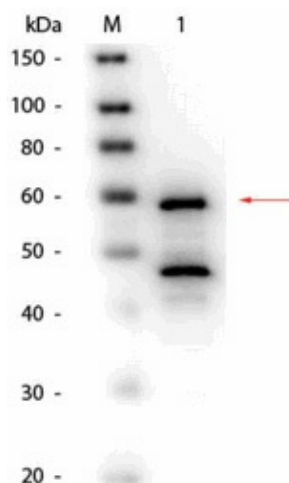
Product data:

Product Type:	Primary Antibodies
Applications:	ELISA, IP, WB
Recommended Dilution:	Western blot: 1/500-1/2,500. Immunoprecipitation: 1/100. ELISA: 1/1,000-1/5,000. This product has been assayed against 1.0 µg of Bilirubin oxidase [Myrothecium verrucaria] in a standard capture ELISA using peroxidase conjugated streptavidin and ABTS as a substrate for 30 minutes at room temperature. A working dilution of 1:1,000 to 1:3,000 of the reconstitution concentration is suggested.
Reactivity:	Myrothecium
Host:	Goat
Clonality:	Polyclonal
Immunogen:	Bilirubin oxidase from Myrothecium verrucaria
Specificity:	This antibody detects Bilirubin oxidase [Myrothecium verrucaria]. Cross reactivity against Bilirubin oxidase from other sources is unknown. Assay by immunoelectrophoresis resulted in a single precipitin arc against anti-biotin, anti-goat serum as well as purified and partially purified Bilirubin oxidase [Myrothecium verrucaria].
Formulation:	0.02 M Potassium phosphate, 0.15 M Sodium chloride, pH 7.2 Label: Biotin State: Purified State: Lyophilized purified Ig fraction Stabilizer: 10 mg/ml BSA (immunoglobulin and protease free) Preservative: 0.01% (w/v) Sodium azide
Reconstitution Method:	Restore with 0.1 ml of deionized water (or equivalent).
Concentration:	lot specific
Purification:	Delipidation, salt fractionation and ion exchange chromatography followed by extensive dialysis against the buffer
Conjugation:	Biotin



[View online »](#)

- Storage:** Store lyophilized at 2-8°C for 6 months or at -20°C long term.
After reconstitution store the antibody undiluted at 2-8°C for one month or (in aliquots) at -20°C long term.
Avoid repeated freezing and thawing.
- Stability:** Shelf life: one year from despatch.
- Database Link:** [Q12737](#)
- Background:** Bilirubin Oxidase is an enzyme that catalyses the oxidation of bilirubin to biliverdin and other substrates. This enzyme has been expected to be used in the field of clinical pathology for the enzymatic determination of total bilirubin in serum and the treatment of jaundice and hyperbilirubinemia.

Product images:

Western blot of goat anti Bilirubin oxidase antibody biotin conjugated Cat.-No.[R1066B].
Lane 1: Bilirubin oxidase (*Myrothecium verrucaria*). Load: 50 ng per lane. Primary antibody: Goat anti bilirubin oxidase (*Myrothecium verrucaria*) antibody biotin conjugat