

## Product datasheet for **R1064BS**

### lacZ Rabbit Polyclonal Antibody

#### Product data:

**Product Type:** Primary Antibodies  
**Applications:** ELISA, IHC, WB  
**Recommended Dilution:** **Western blot:** 1/2,000-1/10,000.

**ELISA:** 1/10,000-1/50,000.

**IHC:** 1/1,000-1/5,000.

The antibody recognizes both frozen tissue sections, paraffin embedded tissue and 4% paraformaldehyde fixed tissue for **most immunohistochemical analysis**. A 1:1,500 dilution has been reported to detect beta-galactosidase in adult rat spinal cord tissue after infection with helper-dependent adenovirus expressing lacZ. In this particular experiment, tissue was perfused with 4% paraformaldehyde and cryostat-cut (35 µm) to produce free-floating sections. A 1:5,000 dilution has been reported to be successful for staining of brain sections from transgenic mice expressing nuclear beta-galactosidase when assayed by immunofluorescence microscopy. A 1:5,000 dilution has been reported for immunofluorescent staining of methanol fixed, devitellinized Drosophila embryos. A 1:5,000 dilution has been reported to be successful for staining by **immunoblot** of beta-galactosidase fusion proteins after transfer using a semi-dry transfer apparatus.

**Reactivity:** Escherichia coli

**Host:** Rabbit

**Clonality:** Polyclonal

**Immunogen:** Beta-galactosidase from E.coli

**Specificity:** Assay by immunoelectrophoresis resulted in a single precipitin arc against anti-rabbit serum as well as purified and partially purified Beta-galactosidase (E.coli).

**Formulation:** 0.02M Potassium phosphate, 0.15M Sodium chloride, pH 7.2

Label: Biotin

State: Purified

State: Lyophilized purified IgG fraction

Stabilizer: 10 mg/ml BSA (immunoglobulin and protease free)

Preservative: 0.01% (w/v) Sodium azide

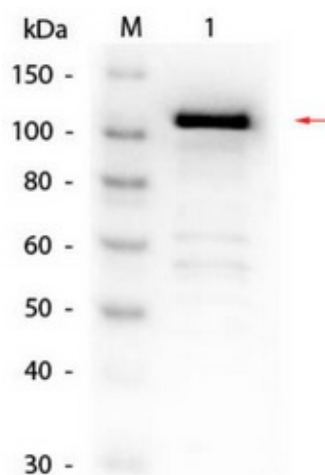
**Reconstitution Method:** Restore with 0.1 ml of deionized water (or equivalent).

**Concentration:** lot specific



[View online »](#)

<b>Purification:</b>	Multi-step process including delipidation, salt fractionation and ion exchange chromatography followed by extensive dialysis against the buffer
<b>Conjugation:</b>	Biotin
<b>Storage:</b>	Store lyophilized at 2-8°C for 6 months or at -20°C long term. After reconstitution store the antibody undiluted at 2-8°C for one month or (in aliquots) at -20°C long term. Avoid repeated freezing and thawing.
<b>Stability:</b>	Shelf life: one year from despatch.
<b>Database Link:</b>	<a href="#">P00722</a>
<b>Synonyms:</b>	Beta-Gal tag, lacZ tag, b0344, JW0335, Beta-Gal Fusion Protein, Lactase

**Product images:**

Western blot of rabbit anti-Beta-galactosidase (*E. coli*) antibody biotin conjugated. Lane 1: Beta-galactosidase. Load: 50 ng per lane. Primary antibody: Beta-galactosidase (*E. coli*) antibody biotin conjugated. [R1064B] at 1:1,000 overnight at 4°C. Secondary antibody: HRP streptavidin secondary antibody at 1/40,000 for 30 min at RT. Blocking buffer ( for fluorescent Western blotting) for 30 min at RT. Predicted/observed size: 116 kDa, 116 kDa for Beta-galactosidase.