

Product datasheet for R1054PS

ALDOA Goat Polyclonal Antibody

Product data:

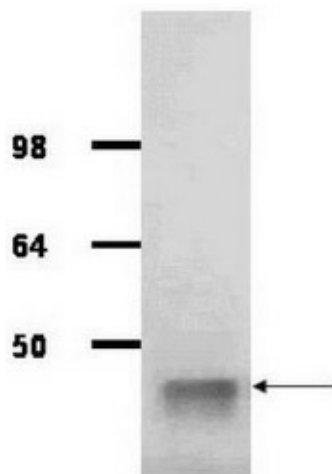
| | |
|------------------------|---|
| Product Type: | Primary Antibodies |
| Applications: | ELISA, IP, WB |
| Recommended Dilution: | Suitable for Immunoblotting (Western or Dot blot), ELISA, Immunoprecipitation and most immunological methods requiring high titer and specificity. Western blot: 1/500-1/5,000. Immunoprecipitation: 1/100. Use approximately 5 µl of antibody to immunoprecipitate 50 µl of protein lysate. ELISA: 1/5,000-1/20,000. This antibody has been assayed against 1.0 µg of aldolase [rabbit muscle] in a standard sandwich ELISA using peroxidase conjugated affinity purified anti-goat IgG [H&L] (rabbit) and ABTS as a substrate for 30 minutes at room temperature. A working dilution of 1/10,000 to 1/40,000 of the reconstitution concentration is suggested for this product. |
| Reactivity: | Human, Rabbit |
| Host: | Goat |
| Clonality: | Polyclonal |
| Immunogen: | Aldolase from rabbit muscle |
| Specificity: | This antibody detects rabbit aldolase. Cross reactivity against aldolase from other tissues and species may also occur. Immunoelectrophoresis gives a single precipitin arc against anti-goat serum, purified and partially purified aldolase [Rabbit muscle]. It has been reported that this antibody can detect human Aldolase on immunoblot showing a 41 kDa band in lysates from MCF7, NMB231 and HBL100 cell lines. |
| Formulation: | 0.02 M Potassium phosphate, 0.15 M Sodium chloride, pH 7.2 State: Purified State: Lyophilized purified Ig fraction. Preservative: 0.01% Sodium azide |
| Reconstitution Method: | Restore with 0.1 ml of deionized water (or equivalent). |
| Concentration: | lot specific |
| Purification: | Prepared from monospecific antiserum by a delipidation, slat fractionation and ion exchange chromatography |



[View online »](#)

| | |
|----------------|--|
| Conjugation: | Unconjugated |
| Storage: | Store lyophilized at 2-8°C for 6 months or at -20°C long term. After reconstitution store the antibody undiluted at 2-8°C for one month or (in aliquots) at -20°C long term. Avoid repeated freezing and thawing. |
| Stability: | Shelf life: one year from despatch. |
| Database Link: | Entrez Gene 100009055 Rabbit P00883 |
| Synonyms: | ALDA, NY-LU-1, Muscle-type aldolase |
| Note: | Conjugates available. Please ask for details. |

Product images:



IgG purified antibody to rabbit muscle aldolase was used at a 1/1000 dilution to detect human aldolase by western blot. A whole cell lysate prepared from human derived A293 cells was loaded on a 4-12% tris glycine gradient gel for SDS-PAGE. The gel was transferred to nitro-cellulose using standard techniques. Antibody reaction with the membrane occurred overnight at 4°C in TTBS supplemented with 2% non-fat dry milk. Color was allowed to develop using SuperSignal West Pico Chemiluminescent Substrate (PIERCE). Other detection methods will yield similar results. This antibody clearly detects a band at ~41 kDa consistent with human aldolase.