

## Product datasheet for **R1054HRPS**

### ALDOA Goat Polyclonal Antibody

#### Product data:

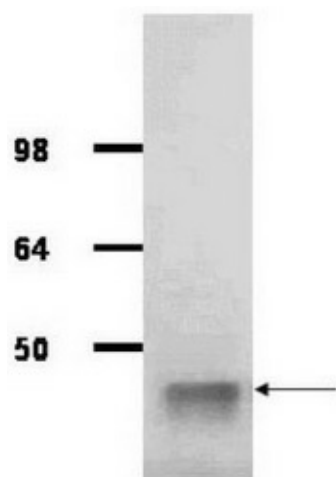
Product Type:	Primary Antibodies
Applications:	ELISA, IP, WB
Recommended Dilution:	<b>Western blot:</b> 1/500-1/5,000. <b>Immunoprecipitation:</b> 1/100. Use approximately 5 µl of antibody to immunoprecipitate 50 µl of protein lysate. <b>ELISA:</b> 1/5000-1/20,000. This antibody has been assayed against 1.0 µg of aldolase [rabbit muscle] in a standard capture ELISA using ABTS as a substrate for 30 minutes at room temperature. A working dilution of 1/1,000 to 1/2,000 of the reconstitution concentration is suggested.
Reactivity:	Human, Rabbit
Host:	Goat
Clonality:	Polyclonal
Immunogen:	Aldolase from rabbit muscle
Specificity:	This antibody detects rabbit aldolase. Cross reactivity against aldolase from human tissues is known. Crossactivity against aldolase from other tissues and species may also occur. Immunoelectrophoresis gives a single precipitin arc against anti-goat serum, purified and partially purified aldolase [Rabbit muscle]. It has been reported that this antibody can detect human Aldolase on immunoblot showing a 41 kDa band in lysates from MCF7, NMB231 and HBL100 cell lines.
Formulation:	0.02 M Potassium phosphate, 0.15 M Sodium chloride, pH 7.2 Label: HRP State: Purified State: Lyophilized purified Ig fraction. Stabilizer: 10 mg/ml BSA (immunoglobulin and protease free) Preservative: 0.01% (w/v) Gentamicin sulfate (Do NOT add Sodium azide!) Label: Horseradish peroxidase
Reconstitution Method:	Restore with 0.1 ml of deionized water (or equivalent).
Concentration:	lot specific
Purification:	Delipidation, salt fractionation and ion exchange chromatography followed by extensive dialysis against the buffer



[View online »](#)

Conjugation:	HRP
Storage:	Store lyophilized at 2-8°C for 6 months or at -20°C long term. After reconstitution store the antibody undiluted at 2-8°C for one month or (in aliquots) at -20°C long term. Avoid repeated freezing and thawing. Avoid repeated freezing and thawing.
Stability:	Shelf life: one year from despatch.
Database Link:	<a href="#">Entrez Gene 100009055 Rabbit P00883</a>
Synonyms:	ALDA, NY-LU-1, Muscle-type aldolase

### Product images:



IgG purified antibody to rabbit muscle aldolase was used at a 1/1000 dilution to detect human aldolase by western blot. A whole cell lysate prepared from human derived A293 cells was loaded on a 4-12% tris glycine gradient gel for SDS-PAGE. The gel was transferred to nitro-cellulose using standard techniques. Antibody reaction with the membrane occurred overnight at 4°C in TTBS supplemented with 2% non-fat dry milk. Color was allowed to develop using SuperSignal West Pico Chemiluminescent Substrate (PIERCE). Other detection methods will yield similar results. This antibody clearly detects a band at ~41 kDa consistent with human aldolase.