

Product datasheet for **R1054**

ALDOA Goat Polyclonal Antibody

Product data:

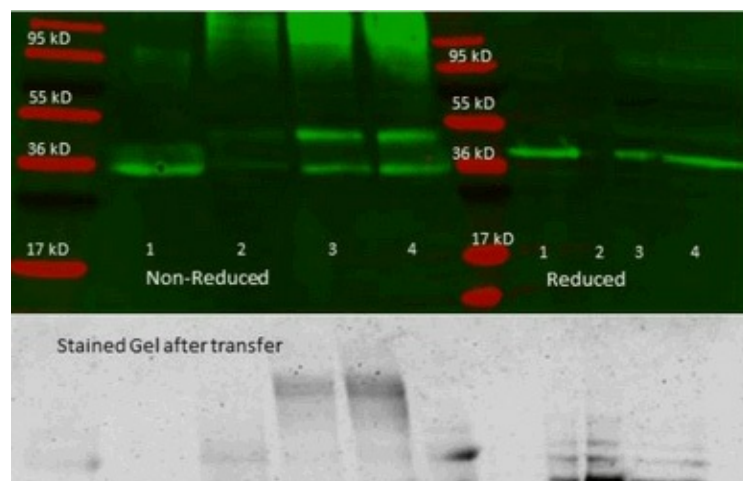
Product Type:	Primary Antibodies
Applications:	ELISA, WB
Recommended Dilution:	Suitable for Immunoblotting (Western or Dot blot), ELISA, Immunoprecipitation and most Immunological methods requiring high titer and specificity. <u>Recommended Dilutions:</u> This product has been assayed against 1.0 mg of Aldolase [Rabbit Muscle] in a standard sandwich ELISA using Peroxidase conjugated Affinity Purified anti-Goat IgG [H&L] (Rabbit) and ABTS (2,2'-azino-bis-[3-ethylbenthiazoline-6-sulfonic acid]) as a substrate for 30 minutes at room temperature. A working dilution of 1:3,000 to 1:12,000 of the reconstitution concentration is suggested for this product. Use approximately 5 ul of antibody to immunoprecipitate 50 ul of protein lysate.
Reactivity:	Human, Rabbit
Host:	Goat
Clonality:	Polyclonal
Immunogen:	Aldolase [Rabbit Muscle].
Specificity:	Assay by immunoelectrophoresis resulted in a single precipitin arc against purified and partially purified Aldolase [Rabbit Muscle]. This antibody will detect human Aldolase. Cross reactivity against Aldolase from other tissues and species may also occur. It has been reported that this antibody can detect human Aldolase on immunoblot showing a 41 kDa band in lysates from MCF7, NMB231 and HBL100 cell lines.
Formulation:	0.02 M Potassium Phosphate, 0.15 M Sodium Chloride, pH 7.2 with 0.01% sodium azide as preservative. State: Serum State: Lyophilized purified Ig fraction.
Reconstitution Method:	Restore with 2.0 ml of deionized water (or equivalent).
Concentration:	lot specific
Purification:	Prepared from monospecific antiserum by a delipidation and defibrination.
Conjugation:	Unconjugated



[View online »](#)

Storage:	<p>Store vial at 2-8°C prior to restoration. Centrifuge product if not completely clear after standing at room temperature. For extended storage aliquot contents and freeze at -20°C or below.</p> <p>This product is stable for one month at 2-8°C as an undiluted liquid.</p> <p>Dilute only prior to immediate use.</p> <p>Avoid cycles of freezing and thawing.</p>
Stability:	Shelf life: One year from despatch.
Database Link:	Entrez Gene 100009055 Rabbit P00883
Synonyms:	ALDA, NY-LU-1, Muscle-type aldolase

Product images:



Immunoprecipitation and Western blot. 300 µl aliquots of whole anti-aldolase antiserum were used to precipitate varying amounts of purified aldolase and precipitates with controls were compared by SDS-PAGE and Western blot. Samples shown in the image are: 1. Purified aldolase 2. 300 µl antiserum with no antigen (negative control) 3. 300 µl antiserum with ~100 µl aldolase (2.5 mg/ml) 4. 300 µl antiserum with ~200 µl aldolase (2.5 mg/ml) For the precipitation, 300 µl of antiserum and an equal volume of aldolase antigen in PBS was incubated ~24 hrs at 4°C, centrifuged for 6 minutes at 13K RPM, washed once with PBS, centrifuged and dissolved in 60 µl 0.1 N NaOH. 90 µl of PBS was added, the sample was divided in 2 portions, and an equal volume of reducing (+4% BME) or non-reducing 2X sample buffer was added. The reduced samples were boiled for five minutes, and all samples were run at 140 V for ~45 minutes on a 4-20% tris/glycine gradient gel. Gel was stained, destained and imaged using standard protocols. Precipitation of aldolase was confirmed by comparison of increasing amounts of antigen with the control protein by SDS PAGE and observation of a 40-45 kD MW band corresponding to Aldolase. Additional higher and lower molecular weight bands correspond to serum proteins.