

## Product datasheet for **R1048PS**

### ALB Rabbit Polyclonal Antibody

#### Product data:

Product Type:	Primary Antibodies
Applications:	ELISA, IHC, IP, WB
Recommended Dilution:	Suitable for Immunoblotting (Western or Dot blot), ELISA, Immunoprecipitation, conjugation and most immunological methods requiring high titer and specificity. <i>Recommended Dilutions:</i> ELISA: 1/20,000-1/100,000. Western blot: 1/2,000-1/10,000. Immunohistochemistry: 1/1,000-1/5,000.
Reactivity:	Bovine
Host:	Rabbit
Isotype:	IgG
Clonality:	Polyclonal
Immunogen:	Native Protein Bovine Serum Albumin. Bovine Serum Albumin antibody was produced by repeated immunizations with bovine serum albumin.
Specificity:	Assay by immunoelectrophoresis resulted in a single precipitin arc against anti-Rabbit Serum as well as purified and partially purified Albumin (Bovine Serum). Cross reactivity against Albumin from other tissues and species may occur but have not been specifically determined.
Formulation:	0.02M Potassium Phosphate, 0.15M Sodium Chloride, pH 7.2 State: Ig Fraction State: Lyophilized purified IgG fraction from monospecific antiserum Stabilizer: None Preservative: 0.01% (w/v) Sodium Azide
Reconstitution Method:	Restore with 0.1 ml of deionized water (or equivalent).
Concentration:	lot specific
Purification:	Multistep Process which includes delipidation, salt fractionation and ion exchange chromatography followed by extensive dialysis against the buffer stated before
Conjugation:	Unconjugated



[View online »](#)

**Storage:** Store lyophilized at 2-8°C for 6 months or at -20°C long term.  
After reconstitution store the antibody undiluted at 2-8°C for one month or (in aliquots) at -20°C long term.  
Dilute only prior to immediate use.  
Centrifuge product if not completely clear after standing at room temperature.  
Avoid repeated freezing and thawing.

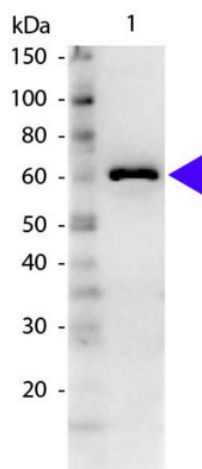
**Stability:** Shelf life: one year from despatch.

**Database Link:** [Entrez Gene 280717 Bovine P02769](#)

**Background:** Bovine Serum Albumin antibody detects BSA. Serum albumin is the main protein of plasma. It has a good binding capacity for water, Ca<sup>2+</sup>, Na<sup>+</sup>, K<sup>+</sup>, fatty acids, hormones, bilirubin and drugs. Its main function is the regulation of the colloidal osmotic pressure of blood. ALB is the major zinc transporter in plasma; it typically binds about 80% of all plasma zinc. BSA antibody is ideal for investigators involved in Cell Signaling, Neuroscience and Signal Transduction research.

**Synonyms:** ALB, BSA, HSA, Serum Albumin

### Product images:



Western blot of Rabbit Anti-Bovine Serum Albumin secondary antibody. Lane 1: BSA. Lane 2: None. Load: 50 ng per lane. Primary antibody: BSA antibody at 1/1,000 overnight at 4°C. Secondary antibody: Peroxidase rabbit secondary antibody at 1:40,000 for 30 min at RT. Blocking: 5% Goat Serum for 30 min at RT. Predicted/Observed size: 66 kDa, 61 kDa for BSA. Other band (s): None