

## Product datasheet for **R1043B**

### Collagen VI (COL6A1) Rabbit Polyclonal Antibody

#### Product data:

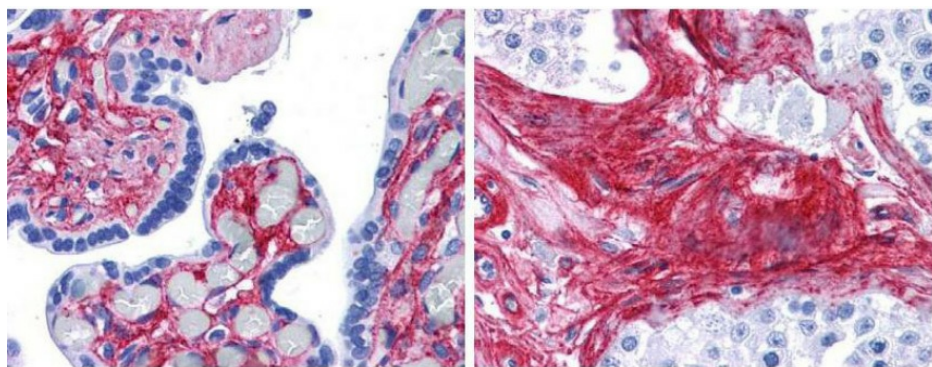
Product Type:	Primary Antibodies
Applications:	ELISA, IHC, IP, WB
Recommended Dilution:	<b>ELISA:</b> 1/10,000-1/50,000. <b>Immunohistochemistry:</b> 1/200-1/1,000. <b>Immunoprecipitation:</b> 1/100. <b>Western Blot:</b> 1/5,000-1/10,000.
Reactivity:	Bovine, Human, Mammalian
Host:	Rabbit
Isotype:	IgG
Clonality:	Polyclonal
Immunogen:	Collagen type VI purified from Human and Bovine placenta.
Specificity:	Typically less than 1% cross reactivity against other types of collagens was detected by ELISA against purified standards. Some class specific anti-collagens may be specific for three-dimensional epitopes which may result in diminished reactivity with denatured collagen or formalin-fixed, paraffin embedded tissues. This antibody reacts with most mammalian Type VI collagens and has negligible cross-reactivity with Type I, II, III, IV and V collagens. Non-specific cross reaction of anti-collagen antibodies with other human serum proteins or non-collagen extracellular matrix proteins is negligible.
Formulation:	0.125M Borate, 0.075M Sodium Chloride, 0.005M EDTA, pH 8.0 Label: Biotin State: Lyophilized purified Ig fraction Stabilizer: 10 mg/ml BSA (Immunoglobulin and Protease free) Preservative: 0.01% (w/v) Sodium Azide Label: Biotinamidocaproate N-Hydroxysuccinimide Ester (BAC) Molar ratio: 10-20 BAC molecules per Rabbit IgG molecule
Reconstitution Method:	Restore with 0.1 ml of deionized water (or equivalent)
Concentration:	lot specific



[View online »](#)

<b>Purification:</b>	Immunoaffinity Chromatography using immobilized antigens followed by extensive cross-adsorption against other collagens, human serum proteins and non-collagen extracellular matrix proteins to remove any unwanted specificities
<b>Conjugation:</b>	Biotin
<b>Storage:</b>	Store lyophilized at 2-8°C for 6 months or at -20°C long term. After reconstitution store the antibody undiluted at 2-8°C for one month or (in aliquots) at -20°C long term. Avoid repeated freezing and thawing.
<b>Stability:</b>	Shelf life: one year from despatch.
<b>Gene Name:</b>	collagen type VI alpha 1
<b>Database Link:</b>	<a href="#">Entrez Gene 1291 Human P12109</a>
<b>Background:</b>	The collagens are a superfamily of proteins that play a role in maintaining the integrity of various tissues. Collagens are extracellular matrix proteins and have a triple helical domain as their common structural element. Collagen VI is a major structural component of microfibrils. The basic structural unit of collagen VI is a heterotrimer of the alpha 1(VI), alpha 2(VI), and alpha 3(VI) chains. Mutations in the genes that code for the collagen VI subunits result in the autosomal dominant disorder, Bethlem myopathy.
<b>Synonyms:</b>	COL6A1
<b>Protein Pathways:</b>	ECM-receptor interaction, Focal adhesion

### Product images:



Anti-Collagen VI Antibody (1:400 45 min RT) showed strong staining in FFPE sections of human placenta (Left) with red staining of stromal and extracellular spaces, and in testis (Right) with staining of extracellular spaces between seminiferous tubules. Slides were steamed in 0.01 M sodium citrate buffer, pH 6.0 at 99-100°C - 20 minutes for antigen retrieval. Images provided courtesy of LifeSpan Biosciences, Seattle, WA