

Product datasheet for R1043

Collagen VI (COL6A1) Rabbit Polyclonal Antibody

Product data:

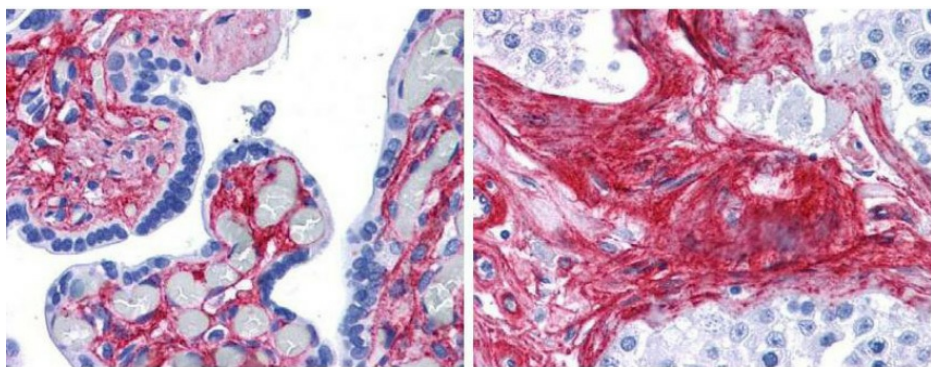
Product Type:	Primary Antibodies
Applications:	ELISA, IHC, IP, WB
Recommended Dilution:	Anti-Collagen antibodies have been used for indirect trapping ELISA for quantitation of antigen in serum using a standard curve, for Immunoprecipitation and for native (non-denaturing, non-dissociating) PAGE and Western blotting for highly sensitive qualitative analysis. Recommended Dilutions: ELISA: 1/5,000-1/50,000. Western blot: 1/1,000-1/10,000. Immuoprecipitation: 1/100. Immunohistochemistry: 1/50-1/200.
Reactivity:	Bovine, Human, Mammalian
Host:	Rabbit
Isotype:	IgG
Clonality:	Polyclonal
Immunogen:	Collagen type VI purified from Human and Bovine placenta.
Specificity:	Typically less than 1% cross reactivity against other types of collagens was detected by ELISA against purified standards. Some class specific anti-collagens may be specific for three-dimensional epitopes which may result in diminished reactivity with denatured collagen or formalin-fixed, paraffin-embedded tissues. This antibody reacts with most mammalian Type VI collagens and has negligible cross-reactivity with Type I, II, III, IV or V collagens. Non-specific cross-reaction of anti-collagen antibodies with other human serum proteins or non-collagen extracellular matrix proteins is negligible.
Formulation:	0.125M Borate, 0.075M Sodium Chloride, 0.005M EDTA, pH 8.0 State: Purified State: Liquid (sterile filtered) purified Ig fraction Stabilizer: None Preservative: 0.01% (w/v) Sodium Azide
Concentration:	lot specific



[View online »](#)

Purification:	Immunoaffinity Chromatography using immobilized antigens followed by extensive cross-adsorption against other collagens, human serum proteins and non-collagen extracellular matrix proteins to remove any unwanted specificities
Conjugation:	Unconjugated
Storage:	Store undiluted at 2-8°C for one month or (in aliquots) at -20°C for longer. Dilute only prior to immediate use. Avoid repeated freezing and thawing.
Stability:	Shelf life: One year from despatch.
Gene Name:	Homo sapiens collagen type VI alpha 1 chain (COL6A1)
Database Link:	Entrez Gene 1291 Human P12109
Background:	Collagens are highly conserved throughout evolution and are characterized by an uninterrupted "Glycine-X-Y" triplet repeat that is a necessary part of the triple helical structure. For these reasons it is often extremely difficult to generate antibodies with specificities to collagens. The development of type specific antibodies is dependent on NON-DENATURED three-dimensional epitopes. For immunization collagens from human and bovine placenta and cartilage extensively purified by limited pepsin digestion and selective salt precipitation were used. This preparation results in a native conformation of the protein. Antibodies are isolated from rabbit antiserum and are extensively cross-adsorbed by immunoaffinity purification to produce 'type' specific antibodies. Greatly diminished reactivity and selectivity of these antibodies will result if denaturing and reducing conditions of SDS-PAGE and immunoblotting are used.
Synonyms:	COL6A1
Protein Pathways:	ECM-receptor interaction, Focal adhesion

Product images:



Anti Collagen VI antibody (1:400 45 min RT) showed strong staining in FFPE sections of human placenta (Left) with red staining of stromal and extracellular spaces, and in testis (Right) with staining of extracellular spaces between seminiferous tubules). Slides were steamed in 0.01 M sodium citrate buffer, pH 6.0 at 99-100°C - 20 minutes for antigen retrieval. Images provided courtesy of LifeSpan Biosciences, Seattle, WA