

Product datasheet for **R1039B**

Collagen II (COL2A1) Rabbit Polyclonal Antibody

Product data:

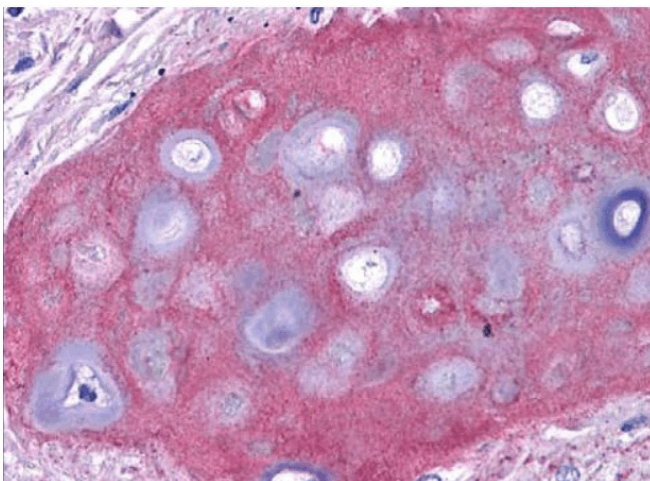
Product Type:	Primary Antibodies
Applications:	ELISA, IHC, IP, WB
Recommended Dilution:	Anti-Collagen antibodies have been used for indirect trapping ELISA for quantitation of antigen in serum using a standard curve, for immunoprecipitation and for Western blotting for highly sensitive qualitative analysis. <i>Recommended Dilutions:</i> ELISA: 1/10,000-1/50,000. Western blot: 1/5,000-1/10,000. Immunoprecipitation: 1/100. Immunohistochemistry: 1/200-1/1,000.
Reactivity:	Bovine, Human, Mouse, Rat, Sheep
Host:	Rabbit
Isotype:	IgG
Clonality:	Polyclonal
Immunogen:	Collagen type II purified from adult Human knee and Bovine nasal cartilage. For immunization collagens extensively purified by limited pepsin digestion and selective salt precipitation were used. This preparation results in a native conformation of the protein.
Specificity:	Crossreactivity < 1% to other collagens was detected by ELISA against purified standards. Some class specific anti-collagens may be specific for three-dimensional epitopes which may result in diminished reactivity with denatured collagen or formalin-fixed, paraffin embedded tissues. This antibody reacts with most mammalian Type II collagens and has negligible cross-reactivity with Type I, III, IV, V or VI collagens. Non-specific cross reaction of anti-collagen antibodies with other human serum proteins or non-collagen extracellular matrix proteins is negligible.
Formulation:	0.1M Sodium Borate, 0.075M Sodium Chloride, 0.005M EDTA, pH 8.0 Label: Biotin State: Lyophilized purified IgG fraction Stabilizer: 10 mg/ml BSA (IgG and Protease free) Preservative: 0.01% (w/v) Sodium Azide Label: Biotinamidocaproate N-Hydroxysuccinimide Ester (BAC) Molar ratio: 10-20 BAC molecules per Rabbit IgG molecule



[View online »](#)

Reconstitution Method:	Restore with 0.1 ml deionized water (or equivalent)
Concentration:	lot specific
Purification:	Immunoaffinity Chromatography using immobilised antigens followed by extensive cross-adsorption against other collagens, human serum proteins and non-collagen extracellular matrix proteins to remove any unwanted specificities.
Conjugation:	Biotin
Storage:	Store lyophilized at 2-8°C for 6 months or at -20°C long term. After reconstitution store the antibody undiluted at 2-8°C for one month or (in aliquots) at -20°C long term. Avoid repeated freezing and thawing.
Stability:	Shelf life: one year from despatch.
Gene Name:	collagen type II alpha 1 chain
Database Link:	Entrez Gene 1280 Human P02458
Background:	Collagens are highly conserved throughout evolution and are characterized by an uninterrupted "Glycine-X-Y" triplet repeat that is a necessary part of the triple helical structure. For these reasons it is often extremely difficult to generate antibodies with specificities to collagens. The development of type specific antibodies is dependent on NON-DENATURED three-dimensional epitopes. Antibodies are isolated from rabbit antiserum and are extensively cross-adsorbed by immunoaffinity purification to produce 'type' specific antibodies. Greatly diminished reactivity and selectivity of these antibodies will result if denaturing and reducing conditions of SDS-PAGE and immunoblotting are used.
Synonyms:	COL2A1, Alpha-1 type II collagen

Product images:



Immunohistochemistry of Rabbit Anti-Collagen II Biotin Conjugated Antibody: Tissue: human bronchiolar cartilage (shown). Though not shown, faint to moderate staining of tonsillar squamous epithelium, prostatic stroma, breast, colon, placenta, and dermal connective tissues was also observed.