

## Product datasheet for **R1038B**

### Collagen I (COL1A1) Rabbit Polyclonal Antibody

#### Product data:

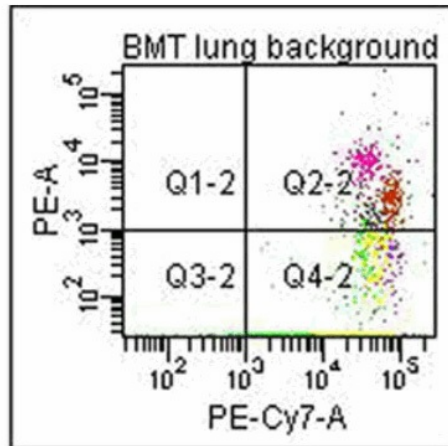
Product Type:	Primary Antibodies
Applications:	ELISA, FC, IHC, IP, WB
Recommended Dilution:	Anti-Collagen Type I Antibody Biotin Conjugated is suitable for Western blot, Immunoprecipitation, Flow Cytometry, and Immunohistochemistry. <i>Recommended Dilutions:</i> <b>ELISA:</b> 1/3,000-1/6,000. <b>Western blot:</b> 1/3,000-1/6,000. <b>Flow Cytometry:</b> User-optimized. <b>Immunoprecipitation:</b> 1/100. <b>Immunohistochemistry:</b> 1/50-1/200.
Reactivity:	Bovine, Human, Mammalian, Mouse, Rat
Host:	Rabbit
Clonality:	Polyclonal
Immunogen:	Collagen Type I from Human and Bovine placenta.
Specificity:	This product has been prepared by Immunoaffinity chromatography using immobilized antigens followed by extensive cross-adsorption against other collagens, human serum proteins and non-collagen extracellular matrix proteins to remove any unwanted specificities. Typically less than 1% cross reactivity against other types of collagens was detected by ELISA against purified standards. Some class specific anti-collagens may be specific for three-dimensional epitopes which may result in diminished reactivity with denatured collagen or formalin-fixed, paraffin embedded tissues. This antibody reacts with most mammalian Type I collagens and has negligible cross-reactivity with Type II, III, IV, V and VI collagens. Non-specific cross-reaction of anti-collagen antibodies with other human serum proteins or non-collagen extracellular matrix proteins is negligible.
Formulation:	0.02M Potassium Phosphate, 0.15M Sodium Chloride, pH 7.2 Label: Biotin State: Lyophilized purified IgG fraction Stabilizer: 10 mg/ml BSA (Ig and Protease free) Preservative: 0.01% (w/v) Sodium Azide Label: Biotinamidocaproate N-Hydroxysuccinimide Ester (BAC)
Reconstitution Method:	Restore with 0.1 ml of deionized water (or equivalent).



[View online »](#)

<b>Concentration:</b>	lot specific
<b>Purification:</b>	Immunoaffinity Chromatography
<b>Conjugation:</b>	Biotin
<b>Storage:</b>	Store lyophilized at 2-8°C for 6 months or at -20°C long term. After reconstitution store the antibody undiluted at 2-8°C for one month or (in aliquots) at -20°C long term. Avoid repeated freezing and thawing.
<b>Stability:</b>	Shelf life: one year from despatch.
<b>Gene Name:</b>	collagen type I alpha 1
<b>Database Link:</b>	<a href="#">Entrez Gene 12842 Mouse</a> <a href="#">Entrez Gene 29393 Rat</a> <a href="#">Entrez Gene 1277 Human P02452</a>
<b>Background:</b>	Collagens are highly conserved throughout evolution and are characterized by an uninterrupted "Glycine-X-Y" triplet repeat that is a necessary part of the triple helical structure. For these reasons, it is often extremely difficult to generate antibodies with specificities to collagens. The development of type specific antibodies is dependent on NON-DENATURED three-dimensional epitopes. Collagens for immunization from human and bovine placenta and cartilage have been extensively purified by limited pepsin digestion and selective salt precipitation. This preparation results in a native conformation of the protein. Antibodies are isolated from rabbit antiserum and are extensively cross-adsorbed by immunoaffinity purification to produce 'type' specific antibodies. Greatly diminished reactivity and selectivity of these antibodies will result if denaturing and reducing conditions are used for SDS PAGE and immunoblotting.
<b>Synonyms:</b>	COL1A1, COL1A2, Alpha-1 type I collagen, Alpha-2 type I collagen
<b>Protein Families:</b>	Druggable Genome
<b>Protein Pathways:</b>	ECM-receptor interaction, Focal adhesion

## Product images:



Flow Cytometry of Anti-Collagen Type I Biotin Conjugated Antibody. Cells: Mouse lung. Stimulation: none. Primary antibody: Biotin conjugated anti-Collagen type I antibody. Secondary Antibody: PE-conjugated CD45 and PE-conjugated anti-Collagen type I secondary antibody.