

Product datasheet for R1029P

Apolipoprotein A I (APOA1) Goat Polyclonal Antibody

Product data:

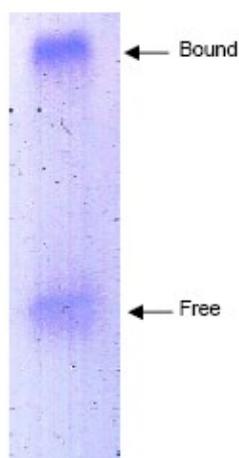
Product Type:	Primary Antibodies
Applications:	ELISA, IHC, IP, WB
Recommended Dilution:	Anti-Apolipoprotein antibodies have been used for Indirect trapping ELISA for quantitation of antigen in serum using a standard curve, for Immunoprecipitation and for Western blotting for highly sensitive qualitative analysis. Recommended Dilutions: ELISA: 1/10,000-1/20,000. Western blot: 1/1,000-1/2,000. Immunoprecipitation: 1/100. Immunohistochemistry: 1/50-1/200.
Reactivity:	Human
Host:	Goat
Clonality:	Polyclonal
Immunogen:	Apolipoprotein Type A-I was isolated from Human plasma by density gradient centrifugation followed by HPLC purification.
Specificity:	Typically less than 1% cross reactivity against other types of Apolipoprotein was detected by ELISA against purified standards. This antibody reacts with Human Apolipoprotein A-I and has negligible cross-reactivity with Type A-II, B, C-I, C-II, C-III, E and J Apolipoproteins. Non-specific cross reaction of anti-Apolipoprotein antibodies with other Human serum proteins is negligible.
Formulation:	0.125M Sodium Borate, 0.075M Sodium Chloride, 0.005M EDTA, pH 8.0 State: Purified State: Liquid (sterile filtered) purified IgG fraction Stabilizer: None Preservative: 0.01% Sodium Azide
Concentration:	lot specific
Purification:	Immunoaffinity Chromatography using immobilized antigens followed by extensive cross-adsorption against other Apolipoproteins and human serum proteins to remove any unwanted specificities.



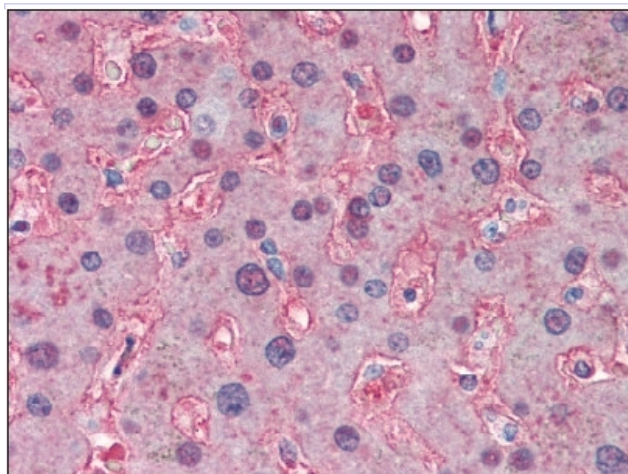
[View online »](#)

Conjugation:	Unconjugated
Storage:	Store vial at 2-8°C prior to opening. This product is stable at 2-8°C as an undiluted liquid. For extended storage mix with an equal volume of glycerol, aliquot contents and freeze at -20°C or below. Avoid cycles of freezing and thawing. Dilute only prior to immediate use.
Stability:	Shelf life: one year from despatch.
Gene Name:	apolipoprotein A1
Database Link:	Entrez Gene 335 Human P02647
Background:	Apolipoprotein A I promotes cholesterol efflux from tissues to the liver for excretion. Apolipoprotein A I is the major protein component of high density lipoprotein (HDL) in the plasma. Synthesized in the liver and small intestine, it consists of two identical chains of 77 amino acids; an 18 amino acid signal peptide is removed co-translationally and a 6 amino acid propeptide is cleaved post-translationally. Apolipoprotein A I is a cofactor for lecithin cholesterolacyltransferase (LCAT) which is responsible for the formation of most plasma cholesteryl esters. Defects in the Apolipoprotein A I gene are associated with HDL deficiency and Tangier disease. The therapeutic potential of apoA-I has been recently assessed in patients with acute coronary syndromes, using a recombinant form of a naturally occurring variant of apoA-I. The availability of recombinant normal apoA-I should facilitate further investigation into the potential usefulness of apoA-I in preventing atherosclerotic vascular diseases.
Synonyms:	APOA1, ApoA-I, Apo-AI, ApoAI

Product images:



Coomassie stained gel showing both free and HDL bound apoA-I eluted from a solid phase resin prepared using anti-Human apoLipoprotein A-I antibody. The resin was reacted with human serum prior to washing and elution of bound proteins. The gel was composed of 0.75% agarose in a native buffer system. Separation occurred at room temperature.



Apolipoprotein A I antibody staining of Paraffin-Embedded Human Liver.