

Product datasheet for **PS100127**

pAAV-EF1a-tGFP-WPRE AAV Gene Expression Vector

Product data:

Product Type: AAV Gene Expression Vectors

C-Tag: tGFP

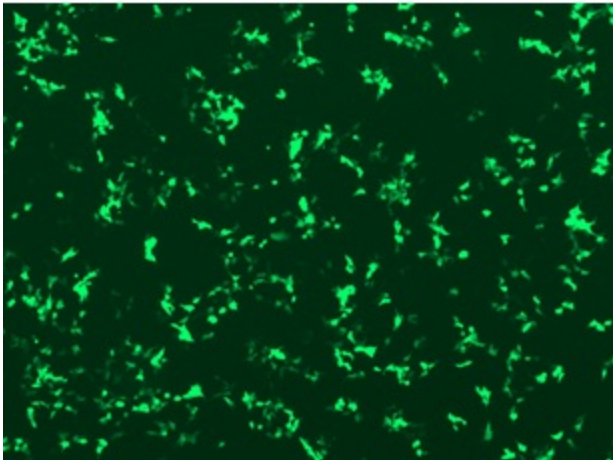
E. coli Selection: Ampicillin (100 ug/mL)

Features:

- OriGene's TrueORF clones can be shuttled into this vector via PrecisionShuttle, a simple cut-and-ligation process.
- The ORF cloned in this vector can be expressed containing c-terminal tGFP.
- EF51 Primer (GE100088) can be used to sequence the target sequence after cloning.
- AC_GFP_R Primer (GE100113) can be used to sequence the target sequence after cloning.

Schematic of the multiple cloning sites:

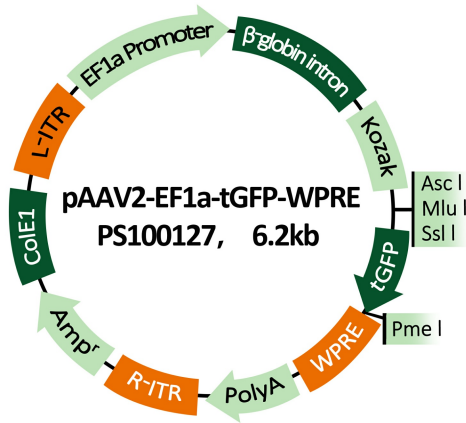
Product images:



GFP expression is observed under microscope 24 hrs post transfection of pAAV2-EF1a-tGFP-WPRE (Cat# PS100127) into HEK293 cells



[View online »](#)



Plasmid map for pAAV2-EF1a-tGFP-WPRE vector(Cat# PS100127)

GGTACCTCGAACATCGATCCGAGGAGATCTGCCGCCGCGATC ^{Asc I} GGCGGCC ^{Mlu I} ACGCGT ^{Sal I} GTCGAC

tGFP tag
 ATG GAG AGC GAC - - - - - GAA GAA AGA GTT TAA ACGGCCGCCAGATCT
 M E S D - - - - - E E R V stop

Multiple cloning site (MCS) of pAAV2-EF1a-tGFP-WPRE vector(Cat# PS100127)