

Product datasheet for PS100108

pLenti-P2A-tGFP Lentiviral Gene Expression Vector

Product data:

Product Type: Lentiviral Gene Expression Vectors

E. coli Selection: Chloramphenicol (34 ug/mL)

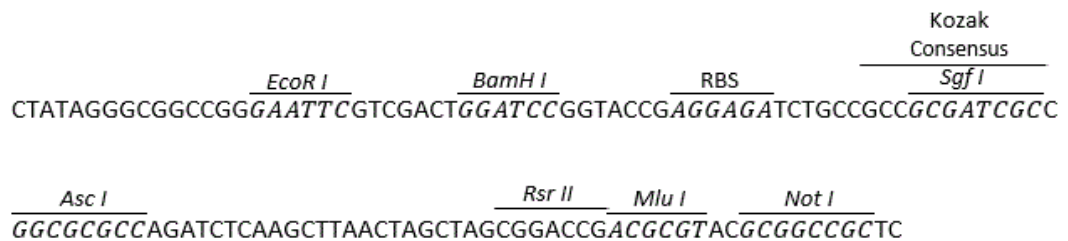
Mammalian Cell Selection: tGFP

Features:

This Lenti vector is a third generation lentiviral vector.

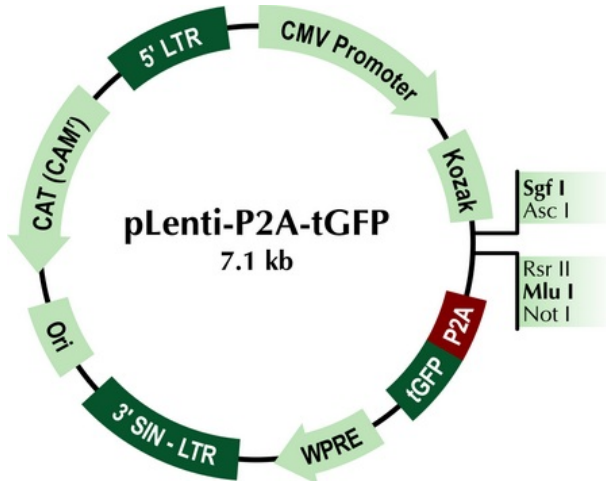
- All OriGene's TrueORF clones can be shuttled into this vector via PrecisionShuttling, a simple cut-and-ligation process.
- The ORF (no stop codon for P2A-tGFP) cloned in this vector will be expressed as native protein, no tag.
- P2A-tGFP is within the Lentiviral packaging cassette and would allow GFP to enrich both the transfected and the transduced cells.
- A brief lentiviral packaging protocol is provided.
- *E. Coli.* selection: Chloramphenicol (34 ug/ml)
- V2_F Primer (GE100111) can be used to sequence the target sequence after cloning.
- AC_GFP_R Primer (GE100113) can be used to sequence the target sequence after cloning.

Schematic of the multiple cloning sites:



[View online »](#)

Product images:



EcoR I
BamH I
RBS
Kozak Consensus
Sgf I

CTATAGGGCGGCCGGGAATTCGTCGACTGGATCCGGTACCGAGGAGATCTGCCGCCGCGATCGCC

Asc I
Rsr II
Mlu I
Not I

GGCGGCCAGATCTCAAGCTTAAGTACTAGCTAGCGGACCGACGCGTACGCGGCCGCTC