

Product datasheet for PS100102

pLenti-C-mGFP-P2A-BSD Lentiviral Gene Expression Vector

Product data:

Product Type: Lentiviral Gene Expression Vectors

C-Tag: mGFP

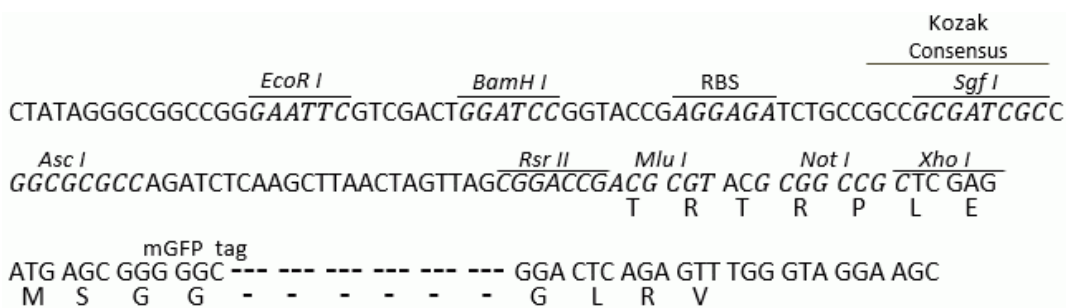
E. coli Selection: Chloramphenicol (34 ug/mL)

Mammalian Cell Selection: Blasticidin

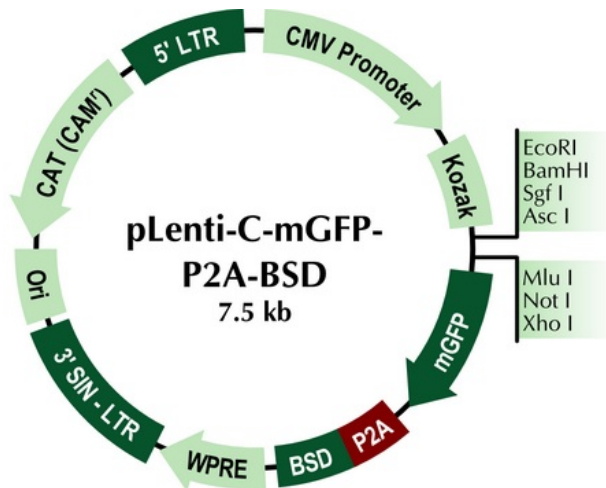
Features: This Lenti vector is a third generation lentiviral vector.

- All OriGene's TrueORF clone can be shuttled into this vector via PrecisionShuttling, a simple cut-and-ligation process.
- The ORF cloned in this vector can be expressed as a tagged protein with a C-terminal monomeric GFP tag.
- P2A-BSD is within the Lentiviral packaging cassette and would allow blasticidin selection in both the transfected and the transduced cells.
- A brief lentiviral packaging protocol is provided.
- E. Coli selection: Chloramphenicol (34ug/ml)
- V2_F Primer (GE100111) can be used to sequence the target sequence after cloning.
- mGFP_R Primer (GE100125) can be used to sequence the target sequence after cloning.

Schematic of the multiple cloning sites:


[View online »](#)

Product images:



	<u>EcoRI</u>	<u>BamHI</u>	<u>RBS</u>	<u>Kozak Consensus</u>
	<u>SgfI</u>			
CTATAGGGCGGCCGGGAATTCGTCTGACTGGATCCGGTACCGAGGAGATCTGCCGCCCGCATCGCC				
<u>AscI</u>		<u>RsrII</u>	<u>MluI</u>	<u>NotI</u>
			<u>XhoI</u>	
GGCGCGCCAGATCTCAAGCTTAAGTAGTACGGACCGACGCGTACGCGGCCGCTCAG				
			T	R
			T	R
			P	L
			E	
mGFP tag				
ATG AGC GGG GGC --- --- --- --- --- GGA CTC AGA GTT TGG GTA GGA AGC				
M S G G - - - - - G L R V				