

## Product datasheet for PS100084

### pLenti-EF1a-C-mGFP Lentiviral Gene Expression Vector

#### Product data:

Product Type: Lentiviral Gene Expression Vectors

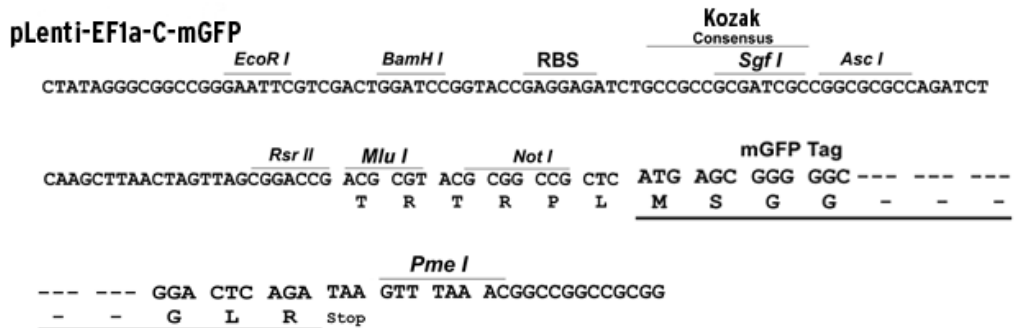
C-Tag: mGFP

E. coli Selection: Chloramphenicol

Features: This Lenti vector is a third generation of lentiviral vector.

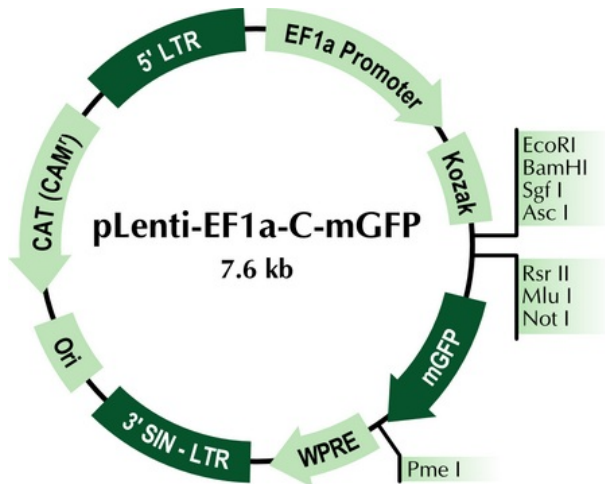
- All OriGene's TrueORF clone can be shuttled into this vector via PrecisionShuttling, a simple cut-and-ligation process.
- The ORF cloned in this vector can be expressed as a tagged protein with a C-terminal mGFP tag.
- The expression of the cloned ORF is driven by EF1a, a constitutive promoter as an alternative of CMV promoter. The latter could be silenced in certain cellular environment.
- A brief [lentiviral packaging protocol](#) is provided.  
*E. Coli* selection: Chloramphenicol(34ug/ml)
- EF51 Primer (GE100088) can be used to sequence the target sequence after cloning.
- mGFP\_R Primer (GE100125) can be used to sequence the target sequence after cloning.
- [Download](#) full vector sequence

Schematic of the multiple cloning sites:



[View online »](#)

Product images:



**pLenti-EF1a-C-mGFP**

<i>EcoRI</i>	<i>BamHI</i>	RBS	<u>Kozak Consensus</u>	<i>SgfI</i>	<i>AscI</i>
CTATAGGGCGCCGGGAATTCGTCGACTGGATCCGATACCGAGGAGATCTGCCGCCGCGATCGCCGGCGCCAGATCT					
<i>RsrII</i>	<i>MluI</i>	<i>NotI</i>	<u>mGFP Tag</u>		
CAAGCTTAAGTACTAGTTAGCGGACCG	ACG CGT	ACG CGG CCG CTC	ATG AGC GGG GGC	---	---
	T R T R P L		M S G G	- - -	- - -
-----					
	<i>PmeI</i>				
---	GGA CTC AGA TAA	GTT TAA ACGGCCGGCCGCGG			
- - -	G L R	Stop			