

Product datasheet for PS100076

pEX-C-His Bacterial Expression Vector

Product data:

Product Type: Bacterial Expression Vectors

C-Tag: His

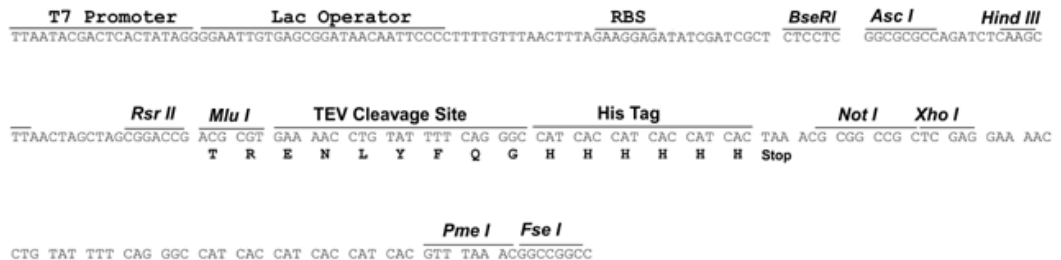
E. coli Selection: Ampicillin (100 ug/mL)

Features: This vector is for E.coli expression.

- Upon IPTG induction, ORFs cloned in this vector can be expressed in E.coli (BL21/DE3) as tagged protein with a C-terminal His tag.
- Unlike other PrecisionShuttle vectors, this vector does not have an Sgf I site at the multiple cloning site. Instead a BseR I site can be used to generate Sgf I-compatible end for in-frame shuttling from TrueORF clones in pEntry vector.
- Detection and purification of the transgene are best done using an anti-His antibody or a nickel affinity column.
- If the C-terminal tagging interferes with the protein's function, you can choose the N-terminal His-tagging vector, PS100030

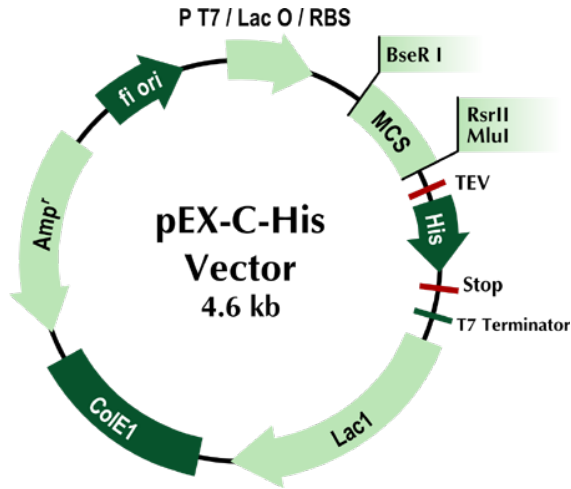
Schematic of the multiple cloning sites:

pEX-C-His



[View online »](#)

Product images:



pEX-C-His

T7 Promoter **Lac Operator** **RBS** **BseRI** **Asc I** **Hind III**
 TTAATACGACTCACTATAGGGGAATTGTGAGCGGATAACAATTCGCCCTTTGTGTTAACTTTAGAAGGAGATATCGATCGCT CTCCTC GGC CGC CAG ATCTCAAGC

Rsr II **Mlu I** **TEV Cleavage Site** **His Tag** **Not I** **Xho I**
 TTAAGTACGACTAGCGGACCG ACG CGT GAA AAC CTG TAT TTT CAG GGC CAT CAC CAT CAC CAT CAC TAA ACG CGG CCG CTC GAG GAA AAC
 T R E N L Y F Q G H H H H H H H Stop

Pme I **Fse I**
 CTG TAT TTT CAG GGC CAT CAC CAT CAC CAT CAC GTT TAA ACGGCCGGCC