

Product datasheet for PS100075

pEX-1 Bacterial Expression Vector

Product data:

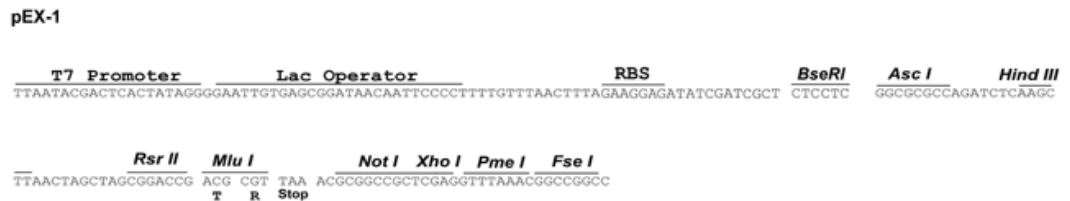
Product Type: Bacterial Expression Vectors

E. coli Selection: Ampicillin (100 ug/mL)

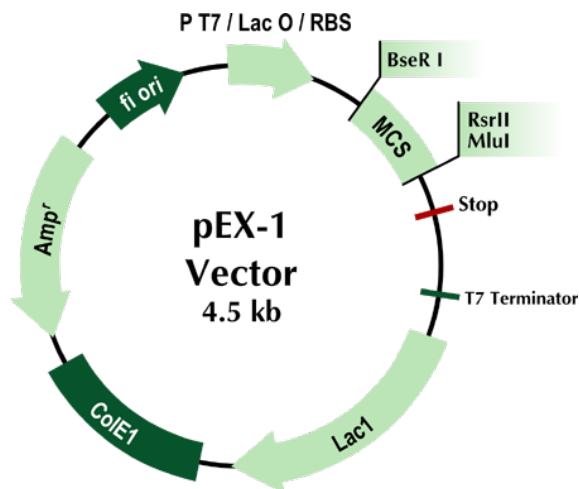
Features: This vector is for E.coli expression.

- Upon IPTG induction, ORFs cloned in this vector can be expressed in E.coli (BL21/DE3) as untagged proteins.
- Unlike other PrecisionShuttle vectors, this vector does not have an Sgf I site at the multiple cloning site. Instead a BseR I site can be used to generate Sgf I-compatible end for in-frame shuttling from TrueORF clones in pEntry vectors.

Schematic of the multiple cloning sites:



Product images:



[View online >](#)

